

CAT. No. 57530X2.0M	IEC 60320 C-14, 10 AMPERE 250 VOLT POWER INLET WITH SINGLE POLE FUSEHOLDER, SNAP-IN MOUNT FOR 2.0 mm THICK PANEL, FIBERGLASS REINFORCED THERMOPLASTIC (PETP) UL 94 V-0. BRASS NICKEL PLATED CONTACTS, BRASS SILVER AND TIN PLATED TERMINALS, 4.8 x 0.8 mm (0.189" x 0.032") QUICK CONNECT Q.D TERMINALS, BLACK. Note: Fuse drawer for power inlet must be ordered separately.
APPROVALS	C(UR)US <input checked="" type="checkbox"/> ENEC 10 <input checked="" type="checkbox"/> CCC <input checked="" type="checkbox"/> VDE <input checked="" type="checkbox"/> UL <input checked="" type="checkbox"/>
CERTIFICATIONS	REACH <input checked="" type="checkbox"/> ROHS <input checked="" type="checkbox"/> ROHS2 (2011/65/EU) <input checked="" type="checkbox"/> ROHS3 (2015/863, 2017/2012) <input checked="" type="checkbox"/> CHINA ROHS <input checked="" type="checkbox"/> CE <input checked="" type="checkbox"/>
STANDARDS	IEC 60320 C-14 <input checked="" type="checkbox"/> IEC 60320-1 <input checked="" type="checkbox"/> IEC 60127-6 <input checked="" type="checkbox"/> UL 498 <input checked="" type="checkbox"/> CSA C22.2 No. 42 <input checked="" type="checkbox"/>

DESCRIPTION:

PANEL MOUNT: SNAP-IN VERSION FROM FRONT SIDE
 APPLIANCE INLET, PIN TEMPERATURE 70°C, PROTECTION CLASS I

ALL DIMENSIONS ARE IN MILLIMETERS

TECHNICAL DATA:

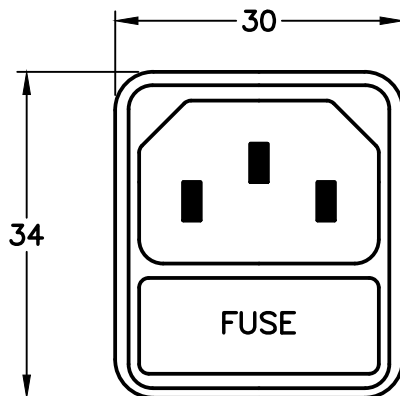
RATINGS IEC: 10A/250VAC; 50HZ
 RATINGS UL/CSA: 10A/250VAC; 60HZ
 DIELECTRIC STRENGTH: >3KVAC BETWEEN L-N
 >4KVAC BETWEEN L/N-PE
 (1MIN/50HZ)

ALLOWABLE OPERATION TEMP: -25°C TO +70°C
 DEGREE OF PROTECTION: FROM FRONT SIDE IP40 ACC TO IEC 60529
 PROTECTION CLASS: SUITABLE FOR APPLIANCES WITH PROTECTION CLASS I ACC TO IEC 61140
 MATERIAL, HOUSING: THERMOPLASTIC, BLACK, UL 94V-0

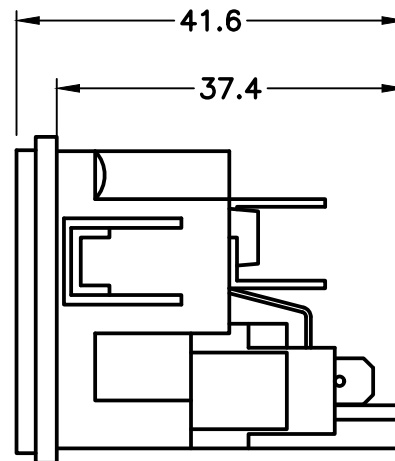
FUSE DRAWER FOR POWER INLET MUST BE ORDERED SEPARATELY				
FUSEDRAWERS FOR POWER INLETS				
	5 x 20 mm 1-POLE BLACK	5 x 20 mm 2-POLE BLACK	1-POLE+SPARE FUSE CASE	2-POLE BLACK W/ SHORTING BAR IN NEUTRAL SIDE
STANDARD	57551	57561	57571	57581
*MEDICAL	57552	57562	57572	57582
*STANDARDS: IEC 601-1. BS 5724 PART 1, DIN/VDE 0750 PART 1 (FOR MEDICAL APPLICATIONS)				

ADDITIONAL SIZES:

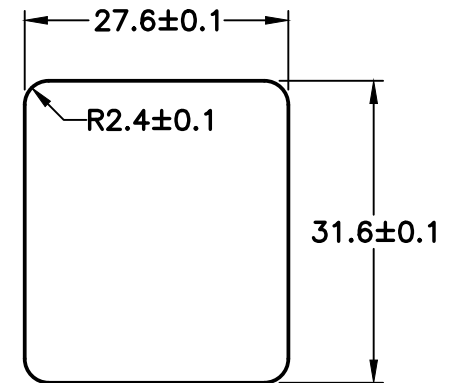
CATALOG No	DESCRIPTION
57530	1.5mm THICK PANELS
57530X2.5M	2.5mm THICK PANELS



**IEC 60320 C-14
FRONT VIEW**



SIDE VIEW



**MOUNTING
DIMENSIONS**