

CAT. No.

57530

IEC 60320 C-14, 10 AMPERE 250 VOLT POWER INLET WITH SINGLE POLE FUSEHOLDER, SNAP-IN MOUNT FOR 1.5 mm THICK PANEL, FIBERGLASS REINFORCED THERMOPLASTIC (PETP) UL 94 V-0. BRASS NICKEL PLATED CONTACTS, BRASS SILVER AND TIN PLATED TERMINALS, 4.8 x 0.8 mm (0.189" x 0.032") QUICK CONNECT Q.D TERMINALS, BLACK. Note: Fuse drawer for power inlet must be ordered separately.

APPROVALS

C(UR)US  ENEC 10  CCC  VDE  UL

CERTIFICATIONS

REACH  ROHS  ROHS2 (2011/65/EU)  ROHS3 (2015/863, 2017/2012)  CHINA ROHS  CE

STANDARDS

IEC 60320 C-14  IEC 60320-1  IEC 60127-6  UL 498  CSA C22.2 No. 42

**DESCRIPTION:**

PANEL MOUNT: SNAP-IN VERSION FROM FRONT SIDE  
 APPLIANCE INLET, PIN TEMPERATURE 70°C, PROTECTION CLASS I

ALL DIMENSIONS ARE IN MILLIMETERS

**TECHNICAL DATA:**

RATINGS IEC: 10A/250VAC; 50HZ  
 RATINGS UL/CSA: 10A/250VAC; 60HZ  
 DIELECTRIC STRENGTH: >3KVAC BETWEEN L-N  
 >4KVAC BETWEEN L/N-PE  
 (1MIN/50HZ)

ALLOWABLE OPERATION TEMP: -25°C TO +70°C  
 DEGREE OF PROTECTION: FROM FRONT SIDE IP40 ACC TO IEC 60529  
 PROTECTION CLASS: SUITABLE FOR APPLIANCES WITH PROTECTION CLASS I ACC TO IEC 61140

MATERIAL, HOUSING: THERMOPLASTIC, BLACK, UL 94V-0

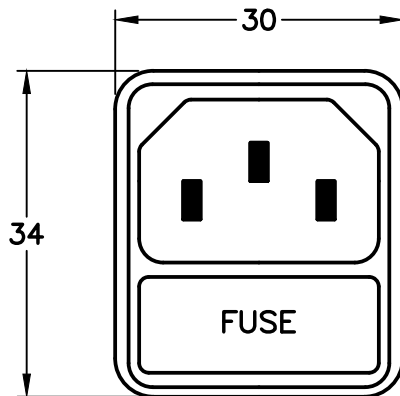
\*\*\*FUSE DRAWER FOR POWER INLET MUST BE ORDERED SEPARATELY\*\*\*

**FUSEDRAWERS FOR POWER INLETS**

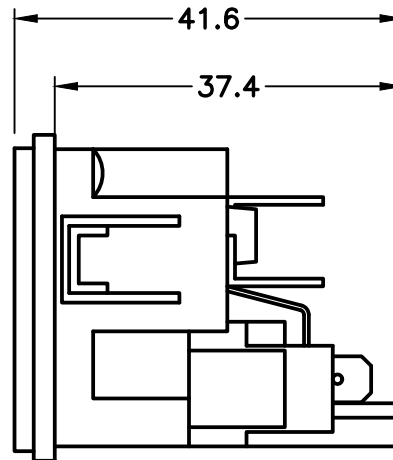
	5 x 20 mm 1-POLE BLACK	5 x 20 mm 2-POLE BLACK	1-POLE+SPARE FUSE CASE	2-POLE BLACK W/ SHORTING BAR IN NEUTRAL SIDE
STANDARD	57551	57561	57571	57581
*MEDICAL	57552	57562	57572	57582
*STANDARDS: IEC 601-1. BS 5724 PART 1, DIN/VDE 0750 PART 1 (FOR MEDICAL APPLICATIONS)				

**ADDITIONAL SIZES:**

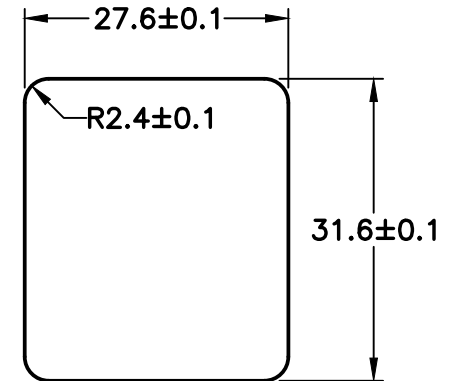
CATALOG No	DESCRIPTION
57530X2.0M	2.0mm THICK PANELS
57530X2.5M	2.5mm THICK PANELS



**IEC 60320 C-14  
 FRONT VIEW**



**SIDE VIEW**



**MOUNTING  
 DIMENSIONS**