

CAT. No.

57425X2.5M

IEC 60320 C-14 POWER ENTRY MODULE, 10 AMPERE 250 VOLT, SINGLE POLE, SNAP-IN MOUNT FOR 2.5 mm THICK PANEL, THERMOPLASTIC POLYAMID 6.6, BRASS NICKEL PLATED TERMINALS AND CONTACTS, FUSE DRAWER FOR 5 x 20 mm FUSE AND SPARE FUSE COMPARTMENT, 3.5 x 0.8 mm (0.138" x 0.032") SOLDER TERMINALS, 2 POLE-3 WIRE GROUNDING, BLACK.

APPROVALS

C(UR)US ENEC 10 CCC VDE UL

CERTIFICATIONS

REACH ROHS ROHS2 (2011/65/EU) ROHS3 (2015/863, 2017/2012) CHINA ROHS CE

STANDARDS

IEC 60320 C-14 IEC 60320-1 IEC 60127-6 IEC 61058-1 UL 60320-1 CSA C22.2 No. 42

DESCRIPTION:

PANEL MOUNT: SNAP-IN VERSION FROM FRONT SIDE
APPLIANCE INLET, PIN TEMPERATURE 70°C, PROTECTION CLASS I

ALL DIMENSIONS ARE IN MILLIMETERS

TECHNICAL DATA:

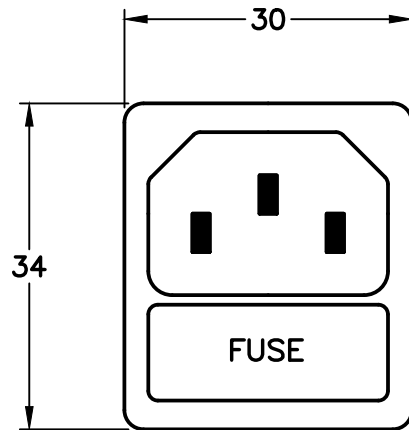
RATINGS IEC: 10A/250VAC; 50HZ
RATINGS UL/CSA: 10A/250VAC; 60HZ
DIELECTRIC STRENGTH: >2KVAC BETWEEN L-N
>2KVAC BETWEEN L/N-PE
(1MIN/50HZ)

ALLOWABLE OPERATION TEMP: -25°C TO +70°C
DEGREE OF PROTECTION: FROM FRONT SIDE IP40 ACC TO IEC 60529
PROTECTION CLASS: SUITABLE FOR APPLIANCES WITH PROTECTION CLASS I ACC TO IEC 61140

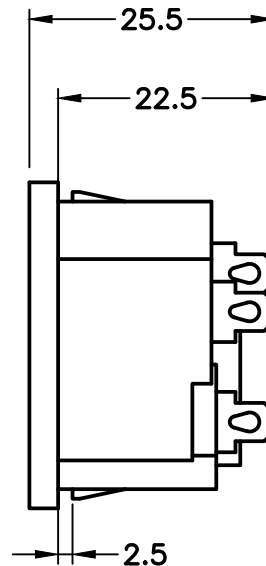
MATERIAL, HOUSING: THERMOPLASTIC, BLACK, UL 94V-0

ADDITIONAL SIZES:

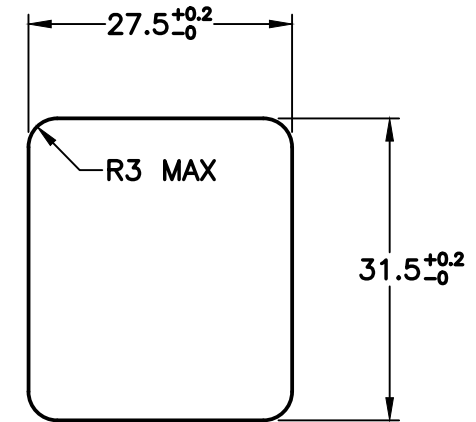
CATALOG No	DESCRIPTION
57425X1.0M	1.0mm THICK PANELS
57425X1.2M	1.2mm THICK PANELS
57425	1.5mm THICK PANELS
57425X2.0M	2.0mm THICK PANELS
57425X3.0M	3.0mm THICK PANELS



IEC 60320 C-14
FRONT VIEW



SIDE VIEW



MOUNTING
DIMENSIONS