

CAT. No.

57313X2.5M

IEC 60320 C-14 POWER INLET, 15 AMPERE 250 VOLT, SNAP-IN PANEL MOUNT FOR 2.5 mm THICK PANEL, 4.8 x 0.8 mm (0.189" x 0.032") QUICK CONNECT Q.D. TERMINALS, 2 POLE-3 WIRE GROUNDING, IP30 RATED, BLACK.

APPROVALS

C(RU)US  ENEC 10  CCC  VDE

CERTIFICATIONS

REACH  ROHS  ROHS2 (2011/65/EU)  ROHS3 (2015/863, 2017/2012)  CHINA ROHS  CE

STANDARDS

IEC 60320 C-14  IEC 60320-1  UL 60320-1  CSA C22.2 No. 60320-1

DESCRIPTION:

PANEL MOUNT: SNAP-IN MOUNTING FROM FRONT SIDE  
APPLIANCE INLET, PIN TEMPERATURE 70°C, PROTECTION CLASS I

ALL DIMENSIONS ARE IN MILLIMETERS

TECHNICAL DATA:

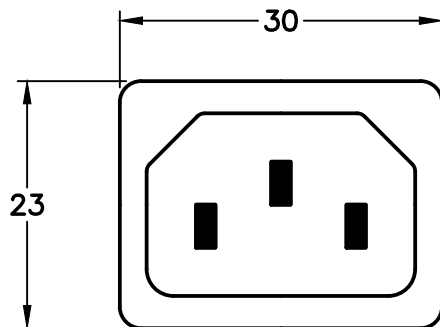
RATINGS IEC: 10A/250VAC; 50HZ  
RATINGS UL/CSA: 15A/250VAC; 60HZ  
DIELECTRIC STRENGTH: >2KVAC BETWEEN L-N  
>2KVAC BETWEEN L/N-PE  
(1MIN/50HZ)

ALLOWABLE OPERATION TEMP: -25°C TO +70°C  
DEGREE OF PROTECTION: FROM FRONT SIDE IP30 ACC TO IEC 60529  
PROTECTION CLASS: SUITABLE FOR APPLIANCES WITH PROTECTION CLASS I ACC TO IEC 61140

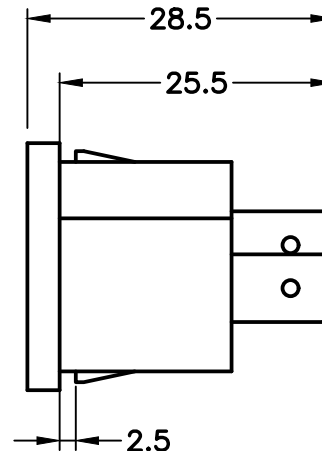
MATERIAL, HOUSING: THERMOPLASTIC, BLACK, UL 94V-0

ADDITIONAL SIZES:

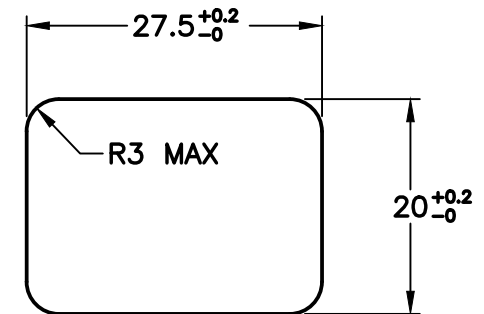
CATALOG No	DESCRIPTION
57313X1.0M	1.0mm THICK PANELS
57313X1.2M	1.2mm THICK PANELS
57313	1.5mm THICK PANELS
57313X2.0M	2.0mm THICK PANELS
57313X3.0M	3.0mm THICK PANELS



IEC 60320 C-14  
FRONT VIEW



SIDE VIEW



MOUNTING  
DIMENSIONS