

GFCI (RCD) RECEPTACLES AND PLUGS

2 Pole 3 Wire Grounding



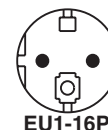
AU1-10R





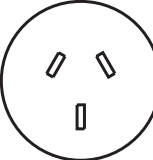

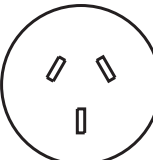

AU1-10P



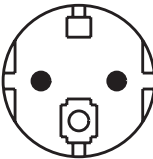

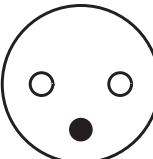



FR1-16R



EU1-16P

Description	Cat. No.	Drawing	Configuration
<p>Australian GFCI (RCD) angle plug. 30 mA trip. 10 ampere 230 volt, 50 Hz. 2400 watt maximum. Test / reset buttons. IP 40. Insulated line/neutral blades. White. Approval: Dept. of Fair Trading Meets AS 3190, 1990</p>	74140-RCD	Pg. 240	  74140-RCD
<p>Australian GFCI (RCD) weatherproof receptacle. 30 mA trip. 10 ampere 230 volt, 50 Hz. Shuttered contacts. On/off switch. IP 55. Gray. Surface mount complete with box and cover. Approval: "CE" mark</p>	74335	Pg. 241	  74335
<p>Australian duplex GFCI (RCD) flush mount receptacle. 10 mA trip. 10 ampere 230 volt, 50 Hz. On/off switch. Test / reset buttons. White. Mounts to standard American 2" x 4" wall box. For surface mounting use box No. 74225. Approval: Dept. of Fair Trading "CE" mark</p>	74200	Pg. 240	  74200

NOTE: GFCI (RCD) receptacles available for many other countries. See page 99 for modular GFCI (RCD) and receptacle combinations.

Description	Cat. No.	Drawing	Configuration
<p>European "SCHUKO" CEE 7/7 GFCI (RCD) angle plug. 30 mA trip. 16 ampere 230 volt, 50 Hz. 3600 watt maximum. Test / reset buttons. IP 44. Black. Approvals: S, GS, "CE" mark</p>	70140-RCD	Pg. 233	  70140-RCD
<p>French GFCI (RCD) flush mount receptacle. 10 mA trip. 16 ampere 230 volt, 50 Hz. Test / reset buttons. White. Mounts to standard American 4" x 4" flush wall box. Approvals: CEBEC, UTE, "CE" mark</p>	71200x45	Pg. 235	  71200 x 45
<p>French GFCI (RCD) weatherproof receptacle. 10 mA trip. 16 ampere 230 volt, 50 Hz. Test / reset buttons. IP 55. Gray. Surface mount complete with box and cover. "CE" mark Available with 30 mA trip catalog No. 71225-30.</p>	71225	Pg. 235	  71225



GFCI (RCD) IN-LINE CONNECTOR, IP 44 2 Pole 3 Wire Grounding



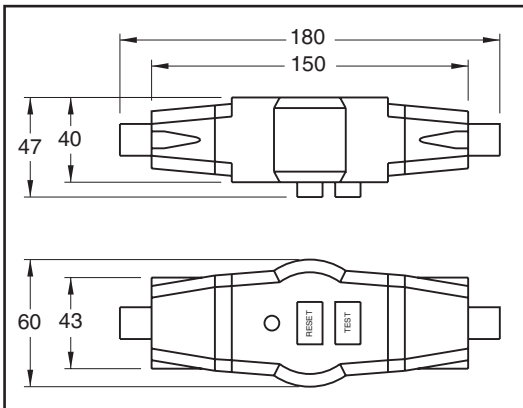
Catalog Number 70400

In-line GFCI (RCD) weatherproof connector. 30 mA trip. 16 ampere 230 volt, 50 Hz.

Test / reset buttons. Black.

Approvals: S, GS, "CE" mark

NOTE: Requires "reset" after power failure. Not recommended for use on freezers, refrigerators or life support equipment.



INTERNATIONAL MODULAR COMPONENTS

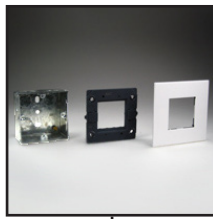
Flush Mount, Surface Mount & Weatherproof

E-mail: sales@internationalconfig.com

Web site: www.internationalconfig.com

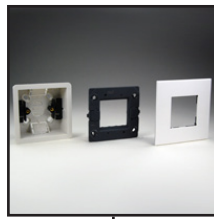
MOUNTING OPTIONS

DEVICE SPECIFICATION DOCUMENTS AVAILABLE ON OUR WEBSITE



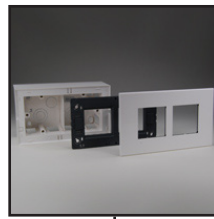
72350
79250X45-N
79265X45-N

Flush Mount Metal Box, Frame & Plate. 45x45mm Opening.



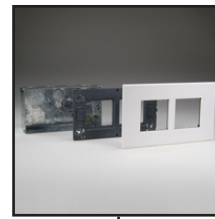
72350-F
79250X45-N
79265X45-N

Flush Mount Plastic Box, Frame & Plate. 45x45mm Opening.



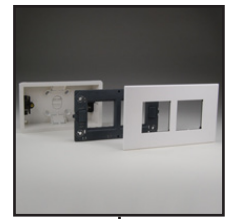
79245X45-N
79270X45-N
79255X45-N

Surface Mount Plastic Box, Frame & Plate. Two 45x45mm Openings.



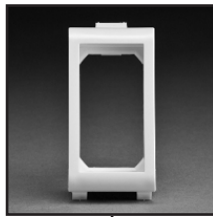
72355
79270X45-N
79255X45-N

Flush Mount Metal Box, Frame & Plate. Two 45x45mm Openings.



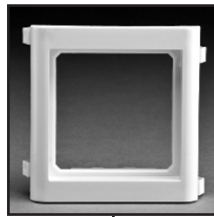
72355-F
79270X45-N
79255X45-N

Flush Mount Plastic Box, Frame & Plate. Two 45x45mm Openings.



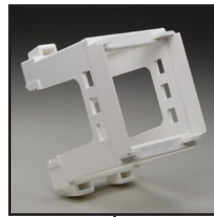
79110X45

Snap-In Panel Mount Frame. White. Accepts 22.5x45mm Devices.



79100X45

Snap-In Panel Mount Frame. White. Accepts 22.5x45mm & 45x45mm Devices.



79595X45

Din Rail Mount Bracket. White. Accepts One 45x45mm Device.



79570X45

Weatherproof Cover. White. IP44. Wall Box or Panel Mount. Accepts 22.5x45mm & 45x45mm Devices.



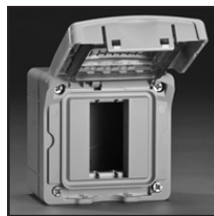
680611X45CV

Weatherproof Cover. Gray. IP55. Panel Mount. Accepts 22.5x45mm Devices.



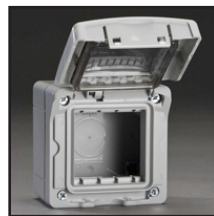
680612X45CV

Weatherproof Cover. Gray. IP55. Panel Mount. Accepts 22.5x45mm & 45x45mm Devices.



680611X45

Weatherproof Cover. Gray. IP55. Surface Mount with Box. Accepts 22.5x45mm Devices.



680612X45

Weatherproof Cover. Gray. IP55. Surface Mount with Box. Accepts 22.5x45mm & 45x45mm Devices.



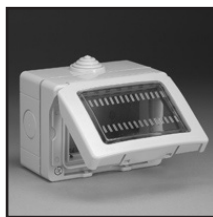
68063X45

Weatherproof Cover. Gray. IP55. Panel Mount. Accepts 22.5mm, 45mm & 67.5mmx45mm Devices.



680635X45

Weatherproof Cover. Gray. IP55. Panel Mount. Accepts 22.5mm, 45mm & 67.5mmx45mm Devices. 90mmx45mm Opening.



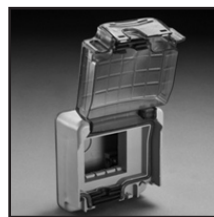
680613X45

Weatherproof Cover & Box. Gray. IP55. Surface Mount. Accepts 22.5mm, 45mm & 67.5mmx45mm Devices.



680614X45

Weatherproof Cover & Box. Gray. IP55. Surface Mount. Accepts 22.5mm, 45mm & 67.5mmx45mm Devices. 90mmx45mm Opening.



684585X45

Weatherproof Cover. Gray. IP66. Panel Mount. Accepts 22.5mmx45mm & 45x45mm Devices.



684636X45

Weatherproof Cover & Box. Gray. IP66. Surface Mount. Accepts 22.5mmx45mm & 45x45mm Devices.



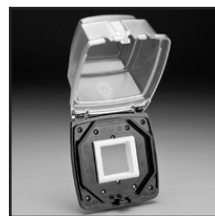
684638X45

Weatherproof Cover & Box. Gray. IP66. Surface Mount. Accepts 22.5mm, 45mm & 67.5mmx45mm Devices.



684628X45

Weatherproof Cover & Box. Gray. IP66. Surface Mount on 2-Gang American Wall Boxes. Accepts 22.5mmx45mm & 45x45mm Devices. Two 45x45mm Openings.



79575X45

Weatherproof Cover. Flush or Panel Mount on 2-Gang American Wall Boxes. Accepts 22.5x45mm & 45x45mm Devices.



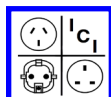
572071X45

USB Power Supply Charger, Single USB Socket, 5V-750mA. For recharging portable devices such as phones, smartphones, MP3 or MP4 players. 22.5x45mm.



572078X45

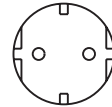
USB Power Supply Charger, Double USB Sockets, 5V-1500mA. For recharging portable devices such as phones, smartphones, tablets, PC, MP3 or MP4 players. 45x45mm.



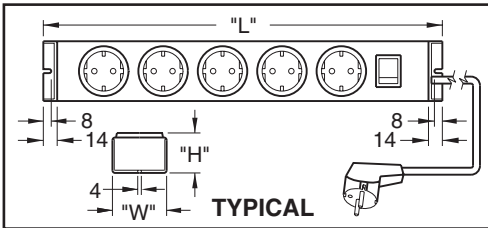
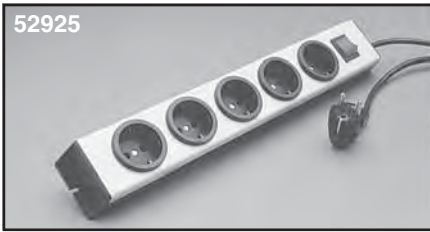
EUROPEAN "SCHUKO" POWER STRIPS

2 Pole 3 Wire Grounding

16 Ampere 250 Volt (CEE-7, DIN 49440), "CE" MARK



EU1-16R



Description	"L"	"W"	"H"	Cat. No.
4 Outlet, without switch	315	60	44	52904
6 Outlet, without switch	433	60	44	52906
8 Outlet, without switch	553	60	44	52908
10 Outlet, without switch	673	60	44	52910
12 Outlet, without switch	793	60	44	52912
5 Outlet, with switch	403	60	44	52925
7 Outlet, with switch	523	60	44	52927
9 Outlet, with switch	643	60	44	52929
11 Outlet, with switch	763	60	44	52931
5 Outlet, with double pole	528	60	44	52720*
16 Ampere circuit breaker				

Approvals - VDE, OVE, KEMA, SEMKO, NEMKO, SETI
Catalog No. 52720 - VDE, OVE.

"CE" mark.

All units are supplied with 3 meters of 1.5 mm² cordage with non-polarized plug.

Units with switch have illuminated on / off rocker.

Color: Black base, silver cover. Cat. No. 52720 has orange cover.

All units accept "SCHUKO" CEE 7 and CEE 7-7 plugs.

All dimensions are in millimeters (1 mm = 0.039").

* Available with 7 outlets (No. 52721) and 9 outlets (No. 52722).

NOTE: Mating plugs are shown on page 60.

Surge Suppression / Filtered Strip

Cat. No. **Description**
52855 5 Outlet with filter and surge protection, 6 ampere 230 volt, fused, on / off switch, 1.5 meters of 1.5 mm² cordage with non-polarized plug, black / silver color. VDE, OVE and GS approved.
"CE" mark.

52855-A Same as 52855 except rated 16 ampere 230 volt. Less fuse. 2 meter cord.
"CE" mark.

See page 225 for dimensional data.

GFCI Outlet Strips

Cat. No. **Description**
52765-30 5 Outlet with double pole GFCI circuit breaker, 30 mA trip level, 1.5 meters of 1.5 mm² cordage with non-polarized plug, black / orange color. VDE and OVE approved. **"CE" mark.**

52765-10 Same as No. 52765-30 except with 10 mA trip level.

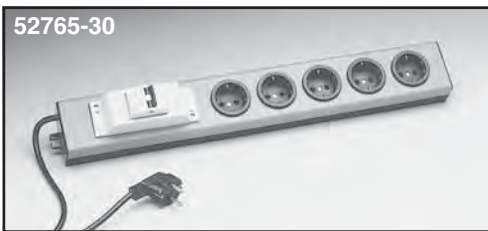
See page 224 for dimensional data.

19" Rack Mount Blank Plate

Cat. No. **Description**
52019 Blank plate. Gray. Designed for mounting short length power strips to 19" center to center racks.

See page 223 for dimensional data.

NOTE: See pages 102-104 for rack mount series.



GFCI & OVERLOAD DIN-RAIL MOUNT CIRCUIT BREAKERS







E-mail: sales@internationalconfig.com

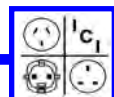
RCCB 240 VOLT 50Hz CIRCUIT BREAKERS

Web site: www.internationalconfig.com

RCCB / RCBO COMBINATION GFCI & OVERLOAD CIRCUIT BREAKERS

MCB OVERLOAD PROTECTION CIRCUIT BREAKERS

	Part Number	Amp Rating	Trip Current	Description
 <p>EAM162V</p>	EAM162V	16	10 mA	European / International GFCI, RCCB double pole circuit breakers. GFCI, RCCB circuit breakers only provide GFCI protection. For overload protection use MCB circuit breakers or combination protection RCBO breakers. DIN rail mount. Box type terminals accepts 1 to 50 mm ² conductors. 2 Module size. Complies with standards: IEC-EN 61008
	EAM162H	16	30 mA	
	EAM252H	25	30 mA	
	EAM252M	25	100 mA	
	EAM402H	40	30 mA	
	EAM402M	40	100 mA	
 <p>EAD16BH30</p>	EAD06BH30	6	30 mA	European / International GFCI, RCBO, B-curve, single pole circuit breakers. GFCI, RCBO circuit breakers provide GFCI and overload protection. DIN rail mount. Box type terminals accepts 1 to 50 mm ² conductors. 1 Module size. Complies with standards: IEC-EN 61009
	EAD10BH30	10	30 mA	
	EAD16BH30	16	30 mA	
	EAD20BH30	20	30 mA	
	EAD25BH30	25	30 mA	
	EAD32BH30	32	30 mA	
	EAD40BH30	40	30 mA	
	EAD45BH30	45	30 mA	
 <p>007879</p>	007879	16	10 mA	European / International GFCI, RCBO, C-curve, single pole plus neutral circuit breakers. GFCI, RCBO circuit breakers provide GFCI and overload protection. DIN rail mount. Box type terminals accepts 1 to 50 mm ² conductors. 2 Module size. Complies with standards: IEC 61009-1, IEC 60947-2
	007886	16	30 mA	
	007887	20	30 mA	
	007888	25	30 mA	
	007889	32	30 mA	
	007890	40	30 mA	
 <p>EAD16B</p>	EAD02B	2	--	European / International MCB (miniature circuit breakers), B-curve, single pole circuit breakers. MCB circuit breakers provide only overload protection. DIN rail mount. Box type terminals accepts 1 to 50 mm ² conductors. 1 Module size. Complies with standards: IEC-EN 60898
	EAD04B	4	--	
	EAD06B	6	--	
	EAD10B	10	--	
	EAD13B	13	--	
	EAD16B	16	--	
	EAD20B	20	--	
	EAD25B	25	--	
	EAD32B	32	--	
	EAD40B	40	--	
	EAD50B	50	--	
	EAD63B	63	--	
 <p>2CU32</p>	2CU16 * **	16	--	European / International MCB (miniature circuit breakers), C-curve, double pole circuit breakers. MCB circuit breakers provide only overload protection. DIN rail mount. Box type terminals accepts 1 to 50 mm ² conductors. 2 Module size. Complies with standards: *IEC-EN 60898-I, VDE 0641-11 **UL 508, CSA 22.2 No. 14
	2CU32 **	32	--	
	2CU40 **	40	--	
	2CU63 **	63	--	
 <p>3CU32</p>	3CU16 * **	16	--	European / International MCB (miniature circuit breakers), C-curve, three pole circuit breakers. MCB circuit breakers provide only overload protection. DIN rail mount. Box type terminals accepts 1 to 50 mm ² conductors. 3 Module size. Complies with standards: *IEC-EN 60898-I, VDE 0641-11 **UL 508, CSA 22.2 No. 14
	3CU32 *	32	--	
	3CU63 *	63	--	



CIRCUIT BREAKER ENCLOSURES AND ACCESSORIES
SURFACE MOUNT ENCLOSURES
RECESS FLUSH MOUNT ENCLOSURES
POWER DISTRIBUTION BLOCKS AND BLANKING PLATES

E-mail: sales@internationalconfig.com

Web site: www.internationalconfig.com

Description

Surface mount enclosure.

Part Number: AN25

IP 40 protection. Cable entry top and bottom. For use with 1 double pole or two single pole breakers. Grounding terminal included.



AN25

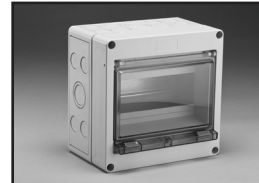


4QEL

Surface mount enclosures.

Part Numbers: 4QEL, 8QEL, 12QEL and 24QEL

Accepts GFCI RCCB breakers, combination GFCI and overload protection RCBO breakers and MCB overload protection circuit breakers. IP54 protection with hinged and gasketed transparent cover. IP65 protection available with optional IP65 cable glands. Cable entry top, bottom and sides. **For use with one-pole, two-pole and three-pole circuit breakers.** Grounding terminal strip, neutral strip, box accessories included.



8QEL



12QEL



24QEL

Surface mount enclosures.

Part Numbers: EAS12, EAS18 and EAS26

Accepts GFCI RCCB breakers, combination GFCI and overload protection RCBO breakers and MCB overload protection circuit breakers. IP30 protection with hinged cover. Cable entry top, bottom and back. **For use with one-pole, two-pole and three-pole circuit breakers.** Includes 100 Amp Main switch, Line busbar, Grounding terminal strip, Neutral terminal strip and box accessories.



EAS12



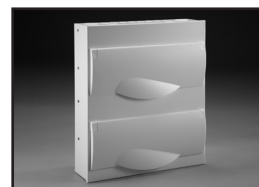
EAS12F



EAS18



EAS18F



EAS26



EAS26F

Recess mount enclosures.

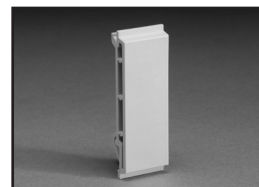
Part Numbers: EAS12F, EAS18F and EAS26F

Accepts GFCI RCCB breakers, combination GFCI and overload protection RCBO breakers and MCB overload protection circuit breakers. IP30 protection with hinged cover. Cable entry top, bottom and back. **For use with one-pole, two-pole and three-pole circuit breakers.** Includes 100 amp Main switch, Line busbar, Grounding terminal strip, Neutral terminal strip and box accessories.

Blanking plate

Part Number: QBP5

Used for filling unused openings in enclosures.



QBP5



38041

One phase power distribution block.

Part Number: 38041

125 ampere 600 volt ac. DIN rail mount. Line side accepts one #8-2 AWG conductor. Six #14-6 AWG loadside terminals.

