

## MOBILE VEHICLE AND RV CONNECTORS IEC 60309 DEVICES, IP44, IP67 (6H)

### 2 Pole 3 Wire Grounding

20 Amp 250 Volt A.C. - North American Rated

16 Amp 220-250 Volt A.C. - European Rated

Blue Color



E-mail: [sales@internationalconfig.com](mailto:sales@internationalconfig.com)

Web site: [www.internationalconfig.com](http://www.internationalconfig.com)

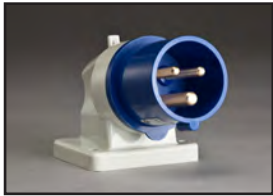
UNIVERSAL  
APPROVED



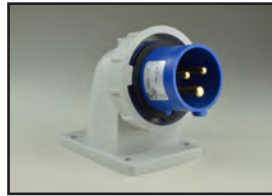
## SPLASHPROOF IP44

## WATERTIGHT IP67

DEVICE SPECIFICATION DOCUMENTS  
AVAILABLE ON OUR WEBSITE



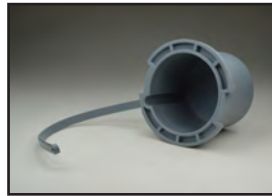
888-611306



888-71326-NS



999-1154210



999-613, 999-613-WP



888-2126-NS



888-2126-NS-WT



888-3126-NS



888-3157-NS



888-13001-NS or 888-410306



888-1372-NS



888-1217-NS



888-1266-NS



888-111-NS



888-1133-NS

### Surface Mount Inlets, Down Angled Type

888-611306 Splashproof Inlet, IP44 Rated.

888-71326-NS Watertight Inlet, IP67 Rated.

Nylon ( Polyamide 6 ) Body. Color: Blue.

Contacts: Nickel Plated Brass, Brass.

Operating Temp: -25°C to + 80°C

### Hull Inlet

999-1154210 Flush mount with splashproof lift lid design. Gasketed. Beige. Release lever unlocks mating connector body.

### Plug and Inlet Closure Cap.

999-613-WP Watertight Cap, IP67 Rated. Color: Gray

999-613 Color: Gray

### Cable Mounting Plugs

888-2126-NS Splashproof Plug, IP44 Rated.

888-2126-NS-WT Watertight Plug, IP67 Rated.

Compression Strain Relief & Cord Grip.

Nylon ( Polyamide 6 ) Body. Color: Blue.

Contacts: Nickel Plated Brass, Brass.

Operating Temp: -25°C to + 80°C

### Cable Mounting Connectors

888-3126-NS Splashproof Connector, IP44 Rated.

888-3157-NS Watertight Connector, IP67 Rated.

Compression Strain Relief & Cord Grip.

Nylon ( Polyamide 6 ) Body. Color: Blue.

Contacts: Nickel Plated Brass, Brass.

Operating Temp: -25°C to + 80°C

### Panel Mount Receptacles, Straight Type

888-13001-NS Splashproof Receptacle, IP44 Rated.

888-410306 Splashproof Receptacle, IP44 Rated.

888-1372-NS Watertight Receptacle, IP67 Rated.

Nylon ( Polyamide 6 ) Body. Color: Blue.

Contacts: Nickel Plated Brass, Brass.

Operating Temp: -25°C to + 80°C

### Panel Mount Receptacles, Angled Type

888-1217-NS Splashproof Receptacle, IP44 Rated.

888-1266-NS Watertight Receptacle, IP67 Rated.

Nylon ( Polyamide 6 ) Body. Color: Blue.

Contacts: Nickel Plated Brass, Brass.

Operating Temp: -25°C to + 80°C

### Surface Mount Receptacles with Box

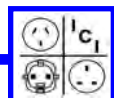
888-111-NS Splashproof Receptacle, IP44 Rated.

888-1133-NS Watertight Receptacle, IP67 Rated.

Nylon ( Polyamide 6 ) Body. Color: Blue.

Contacts: Nickel Plated Brass, Brass.

Operating Temp: -25°C to + 80°C



## INLINE CORD SWITCHES - 10 AMP 250 VOLT

E-mail: [sales@internationalconfig.com](mailto:sales@internationalconfig.com)

Web site: [www.internationalconfig.com](http://www.internationalconfig.com)

## INLINE GFCI PROTECTION DEVICES

### 16 AMP 220-240 VOLT EUROPEAN AND INTERNATIONAL

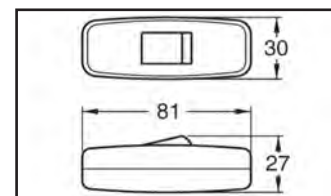
## INLINE CORD SWITCHES - 10 AMP 250 VOLT

**Feed through 3-wire cord switch, 10 ampere 250 volt with Red on / off rocker switch. Black body. Designed for 3 conductor cords. Screw terminals provided for phase, neutral and grounding conductors.**

97500



97500

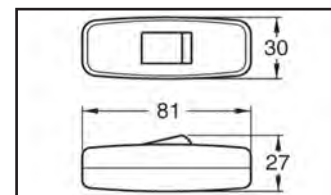


**Feed through 3-wire cord switch, 10 ampere 250 volt with Black on / off rocker switch. Black body. Designed for 3 conductor cords. Screw terminals provided for phase, neutral and grounding conductors.**

97500-B



97500-B

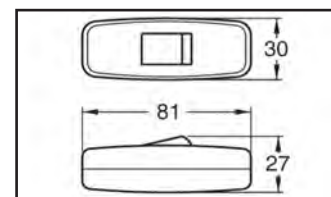


**Feed through 3-wire cord switch, 10 ampere 250 volt with White on / off rocker switch. White body. Designed for 3 conductor cords. Screw terminals provided for phase, neutral and grounding conductors.**

97510



97510



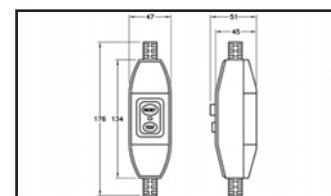
## INLINE GFCI - 16 AMP 220-240 VOLT - EUROPEAN AND INTERNATIONAL

**Inline Connector, International / European 16 ampere 230 / 240 volt, 50Hz, 10Ma trip GFCI (RCCB / RCD), Weatherproof (IP55), 2 pole-3 wire grounding, test / reset buttons, operating temperature = -25°C to +40°C, black.**

70400-10MA



70400-10MA

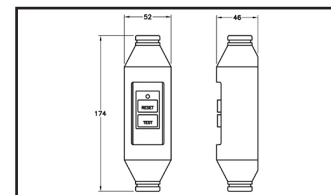


**Inline Connector, International / European 16 ampere 230 volt, 50Hz, 30Ma trip GFCI (RCCB / RCD), Weatherproof (IP56), 2 pole-3 wire grounding, test / reset buttons, operating temperature = -25°C to +40°C, black.**

70400



70400



**Automatic Reset Inline Connector, International / European 16 ampere 220 / 240 volt, 50Hz, 30Ma trip GFCI (RCCB / RCD), Weatherproof (IP55), 2 pole-3 wire grounding, test/reset buttons, operating temperature = -25°C to +40°C, black.**

70400-AR



70400-AR

