

GFCI (RCD) RECEPTACLES AND PLUGS

2 Pole 3 Wire Grounding



AU1-10R



AU1-10P



FR1-16R



EU1-16P

Description	Cat. No.	Drawing	Configuration	
Australian GFCI (RCD) angle plug. 30 mA trip. 10 ampere 230 volt, 50 Hz. 2400 watt maximum. Test / reset buttons. IP 40. Insulated line/neutral blades. White. Approval: Dept. of Fair Trading Meets AS 3190, 1990	74140-RCD	Pg. 240		
Australian GFCI (RCD) weatherproof receptacle. 30 mA trip. 10 ampere 230 volt, 50 Hz. Shuttered contacts. On/off switch. IP 55. Gray. Surface mount complete with box and cover. Approval: "CE" mark	74335	Pg. 241	AU1-10P	74140-RCD
Australian duplex GFCI (RCD) flush mount receptacle. 10 mA trip. 10 ampere 230 volt, 50 Hz. On/off switch. Test / reset buttons. White. Mounts to standard American 2" x 4" wall box. For surface mounting use box No. 74225. Approval: Dept. of Fair Trading "CE" mark	74200	Pg. 240		
NOTE: GFCI (RCD) receptacles available for many other countries. See page 99 for modular GFCI (RCD) and receptacle combinations.			AU1-10R	74335
			AU1-10R	74200

Description	Cat. No.	Drawing	Configuration	
European "SCHUKO" CEE 7/7 GFCI (RCD) angle plug. 30 mA trip. 16 ampere 230 volt, 50 Hz. 3600 watt maximum. Test / reset buttons. IP 44. Black. Approvals: S, GS, "CE" mark	70140-RCD	Pg. 233		
French GFCI (RCD) flush mount receptacle. 10 mA trip. 16 ampere 230 volt, 50 Hz. Test / reset buttons. White. Mounts to standard American 4" x 4" flush wall box. Approvals: CEBEC, UTE, "CE" mark	71200x45	Pg. 235	EU1-16P	70140-RCD
French GFCI (RCD) weatherproof receptacle. 10 mA trip. 16 ampere 230 volt, 50 Hz. Test / reset buttons. IP 55. Gray. Surface mount complete with box and cover. "CE" mark Available with 30 mA trip catalog No. 71225-30.	71225	Pg. 235		
			FR1-16R	71200 x 45
			FR1-16R	71225



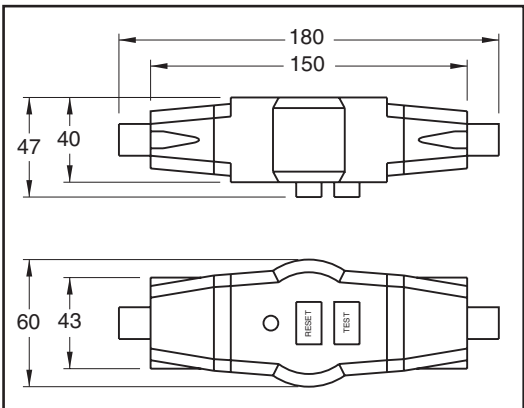
GFCI (RCD) IN-LINE CONNECTOR, IP 44 2 Pole 3 Wire Grounding



Catalog Number 70400

In-line GFCI (RCD) weatherproof connector. 30 mA trip. 16 ampere 230 volt, 50 Hz.
Test / reset buttons. Black.
Approvals: S, GS, "CE" mark

NOTE: Requires "reset" after power failure. Not recommended for use on freezers, refrigerators or life support equipment.



INTERNATIONAL MODULAR COMPONENTS

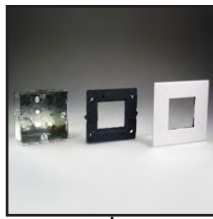
Flush Mount, Surface Mount & Weatherproof

E-mail: sales@internationalconfig.com

Web site: www.internationalconfig.com

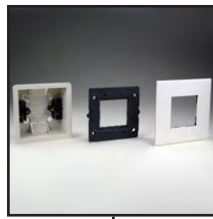
MOUNTING OPTIONS

DEVICE SPECIFICATION DOCUMENTS AVAILABLE ON OUR WEBSITE



72350
79250X45-N
79265X45-N

Flush Mount Metal Box, Frame & Plate. 45x45mm Opening.



72350-F
79250X45-N
79265X45-N

Flush Mount Plastic Box, Frame & Plate. 45x45mm Opening.



79245X45-N
79270X45-N
79255X45-N

Surface Mount Plastic Box, Frame & Plate. Two 45x45mm Openings.



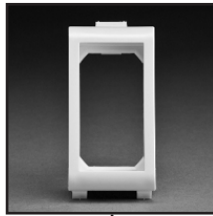
72355
79270X45-N
79255X45-N

Flush Mount Metal Box, Frame & Plate. Two 45x45mm Openings.

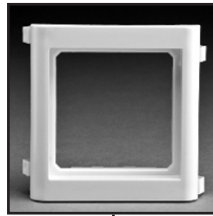


72355-F
79270X45-N
79255X45-N

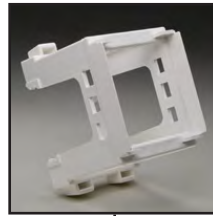
Flush Mount Plastic Box, Frame & Plate. Two 45x45mm Openings.



79110X45
Snap-In Panel Mount Frame. White. Accepts 22.5x45mm Devices.



79100X45
Snap-In Panel Mount Frame. White. Accepts 22.5x45mm & 45x45mm Devices.



79595X45
Din Rail Mount Bracket. White. Accepts One 45x45mm Device.



79570X45
Weatherproof Cover. White. IP44. Wall Box or Panel Mount. Accepts 22.5x45mm & 45x45mm Devices.



680611X45CV
Weatherproof Cover. Gray. IP55. Panel Mount. Accepts 22.5x45mm Devices.



680612X45CV
Weatherproof Cover. Gray. IP55. Panel Mount. Accepts 22.5x45mm & 45x45mm Devices.



680611X45
Weatherproof Cover. Gray. IP55. Surface Mount with Box. Accepts 22.5x45mm Devices.



680612X45
Weatherproof Cover. Gray. IP55. Surface Mount with Box. Accepts 22.5x45mm & 45x45mm Devices.



68063X45
Weatherproof Cover. Gray. IP55. Panel Mount. Accepts 22.5mm, 45mm & 67.5mmx45mm Devices.



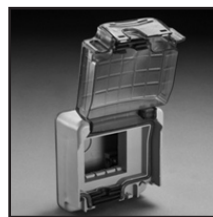
680635X45
Weatherproof Cover. Gray. IP55. Panel Mount. Accepts 22.5mm, 45mm & 67.5mmx45mm Devices. 90mmx45mm Opening.



680613X45
Weatherproof Cover & Box. Gray. IP55. Surface Mount. Accepts 22.5mm, 45mm & 67.5mmx45mm Devices.



680614X45
Weatherproof Cover & Box. Gray. IP55. Surface Mount. Accepts 22.5mm, 45mm & 67.5mmx45mm Devices. 90mmx45mm Opening.



684585X45
Weatherproof Cover. Gray. IP66. Panel Mount. Accepts 22.5mmx45mm & 45x45mm Devices.



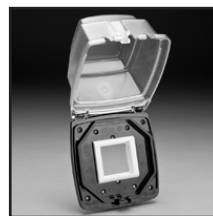
684636X45
Weatherproof Cover & Box. Gray. IP66. Surface Mount. Accepts 22.5mmx45mm & 45x45mm Devices.



684638X45
Weatherproof Cover & Box. Gray. IP66. Surface Mount. Accepts 22.5mm, 45mm & 67.5mmx45mm Devices.



684628X45
Weatherproof Cover & Box. Gray. IP66. Surface Mount. Accepts 22.5mmx45mm & 45x45mm Devices. Two 45x45mm Openings.



79575X45
Weatherproof Cover. Flush or Panel Mount on 2-Gang American Wall Boxes. Accepts 22.5x45mm & 45x45mm Devices.



572071X45
USB Power Supply Charger, Single USB Socket, 5V-750mA. For recharging portable devices such as phones, smartphones, MP3 or MP4 players. 22.5x45mm.



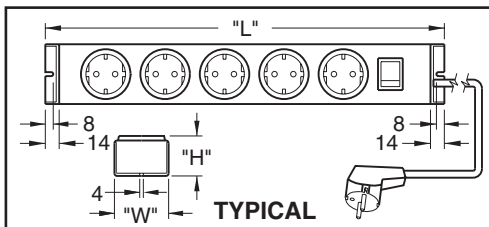
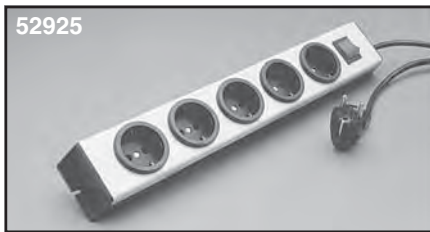
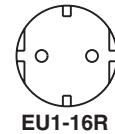
572078X45
USB Power Supply Charger, Double USB Sockets, 5V-1500mA. For recharging portable devices such as phones, smartphones, tablets, PC, MP3 or MP4 players. 45x45mm.



EUROPEAN "SCHUKO" POWER STRIPS

2 Pole 3 Wire Grounding

16 Ampere 250 Volt (CEE-7, DIN 49440), "CE" MARK



Description	"L"	"W"	"H"	Cat. No.
4 Outlet, without switch	315	60	44	52904
6 Outlet, without switch	433	60	44	52906
8 Outlet, without switch	553	60	44	52908
10 Outlet, without switch	673	60	44	52910
12 Outlet, without switch	793	60	44	52912
5 Outlet, with switch	403	60	44	52925
7 Outlet, with switch	523	60	44	52927
9 Outlet, with switch	643	60	44	52929
11 Outlet, with switch	763	60	44	52931
5 Outlet, with double pole	528	60	44	52720*

16 Ampere circuit breaker

Approvals - VDE, OVE, KEMA, SEMKO, NEMKO, SETI
Catalog No. 52720 - VDE, OVE.

"CE" mark.

All units are supplied with 3 meters of 1.5 mm² cordage with non-polarized plug.

Units with switch have illuminated on / off rocker.

Color: Black base, silver cover. Cat. No. 52720 has orange cover.

All units accept "SCHUKO" CEE 7 and CEE 7-7 plugs.

All dimensions are in millimeters (1 mm = 0.039").

* Available with 7 outlets (**No. 52721**) and 9 outlets (**No. 52722**).

NOTE: Mating plugs are shown on page 60.

Surge Suppression / Filtered Strip

Cat. No.	Description
52855	5 Outlet with filter and surge protection, 6 ampere 230 volt, fused, on / off switch, 1.5 meters of 1.5 mm ² cordage with non-polarized plug, black / silver color. VDE, OVE and GS approved.

"CE" mark.

52855-A Same as 52855 except rated 16 ampere 230 volt. Less fuse. 2 meter cord.

"CE" mark.

See page 225 for dimensional data.

GFCI Outlet Strips

Cat. No.	Description
52765-30	5 Outlet with double pole GFCI circuit breaker, 30 mA trip level, 1.5 meters of 1.5 mm ² cordage with non-polarized plug, black / orange color. VDE and OVE approved. "CE" mark.

52765-10 Same as No. 52765-30 except with 10 mA trip level.

See page 224 for dimensional data.

19" Rack Mount Blank Plate

Cat. No.	Description
52019	Blank plate. Gray. Designed for mounting short length power strips to 19" center to center racks.

See page 223 for dimensional data.

NOTE: See pages 102-104 for rack mount series.



GFCI & OVERLOAD DIN-RAIL MOUNT CIRCUIT BREAKERS

RCCB 240 VOLT 50Hz CIRCUIT BREAKERS

RCCB / RCBO COMBINATION GFCI & OVERLOAD CIRCUIT BREAKERS

MCB OVERLOAD PROTECTION CIRCUIT BREAKERS

E-mail: sales@internationalconfig.com

Web site: www.internationalconfig.com



EAM162V



EAD16BH30



007879



EAD16B



2CU32



3CU32

Part Number	Amp Rating	Trip Current
EAM162V	16	10 mA
EAM162H	16	30 mA
EAM252H	25	30 mA
EAM252M	25	100 mA
EAM402H	40	30 mA
EAM402M	40	100 mA
EAD06BH30	6	30 mA
EAD10BH30	10	30 mA
EAD16BH30	16	30 mA
EAD20BH30	20	30 mA
EAD25BH30	25	30 mA
EAD32BH30	32	30 mA
EAD40BH30	40	30 mA
EAD45BH30	45	30 mA
007879	16	10 mA
007886	16	30 mA
007887	20	30 mA
007888	25	30 mA
007889	32	30 mA
007890	40	30 mA
EAD02B	2	--
EAD04B	4	--
EAD06B	6	--
EAD10B	10	--
EAD13B	13	--
EAD16B	16	--
EAD20B	20	--
EAD25B	25	--
EAD32B	32	--
EAD40B	40	--
EAD50B	50	--
EAD63B	63	--
2CU16 **	16	--
2CU32 **	32	--
2CU40 **	40	--
2CU63 **	63	--
3CU16 **, **	16	--
3CU32 *	32	--
3CU63 *	63	--

European / International GFCI, RCCB double pole circuit breakers. GFCI, RCCB circuit breakers only provide GFCI protection. For overload protection use MCB circuit breakers or combination protection RCBO breakers. DIN rail mount. Box type terminals accepts 1 to 50 mm² conductors. 2 Module size. Complies with standards: IEC-EN 61008

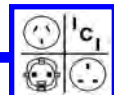
European / International GFCI, RCBO, B-curve, single pole circuit breakers. GFCI, RCBO circuit breakers provide GFCI and overload protection. DIN rail mount. Box type terminals accepts 1 to 50 mm² conductors. 1 Module size. Complies with standards: IEC-EN 61009

European / International GFCI, RCBO, C-curve, single pole plus neutral circuit breakers. GFCI, RCBO circuit breakers provide GFCI and overload protection. DIN rail mount. Box type terminals accepts 1 to 50 mm² conductors. 2 Module size. Complies with standards: IEC 61009-1, IEC 60947-2

European / International MCB (miniature circuit breakers), B-curve, single pole circuit breakers. MCB circuit breakers provide only overload protection. DIN rail mount. Box type terminals accepts 1 to 50 mm² conductors. 1 Module size. Complies with standards: IEC-EN 60898

European / International MCB (miniature circuit breakers), C-curve, double pole circuit breakers. MCB circuit breakers provide only overload protection. DIN rail mount. Box type terminals accepts 1 to 50 mm² conductors. 2 Module size. Complies with standards: *IEC-EN 60898-I, VDE 0641-11 **UL 508, CSA 22.2 No. 14

European / International MCB (miniature circuit breakers), C-curve, three pole circuit breakers. MCB circuit breakers provide only overload protection. DIN rail mount. Box type terminals accepts 1 to 50 mm² conductors. 3 Module size. Complies with standards: *IEC-EN 60898-I, VDE 0641-11 **UL 508, CSA 22.2 No. 14



CIRCUIT BREAKER ENCLOSURES AND ACCESSORIES

SURFACE MOUNT ENCLOSURES

RECESS FLUSH MOUNT ENCLOSURES

POWER DISTRIBUTION BLOCKS AND BLANKING PLATES

E-mail: sales@internationalconfig.com

Web site: www.internationalconfig.com

Description

Surface mount enclosure.

Part Number: AN25

IP 40 protection. Cable entry top and bottom. For use with 1 double pole or two single pole breakers. Grounding terminal included.



AN25

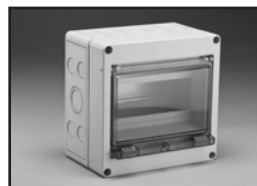


4QEL

Surface mount enclosures.

Part Numbers: 4QEL, 8QEL, 12QEL and 24QEL

Accepts GFCI RCCB breakers, combination GFCI and overload protection RCBO breakers and MCB overload protection circuit breakers. IP54 protection with hinged and gasketed transparent cover. IP65 protection available with optional IP65 cable glands. Cable entry top, bottom and sides. **For use with one-pole, two-pole and three-pole circuit breakers.** Grounding terminal strip, neutral strip, box accessories included.



8QEL



12QEL



24QEL

Surface mount enclosures.

Part Numbers: EAS12, EAS18 and EAS26

Accepts GFCI RCCB breakers, combination GFCI and overload protection RCBO breakers and MCB overload protection circuit breakers. IP30 protection with hinged cover. Cable entry top, bottom and back. **For use with one-pole, two-pole and three-pole circuit breakers.** Includes 100 Amp Main switch, Line busbar, Grounding terminal strip, Neutral terminal strip and box accessories.



EAS12



EAS12F



EAS18



EAS18F



EAS26



EAS26F

Recess mount enclosures.

Part Numbers: EAS12F, EAS18F and EAS26F

Accepts GFCI RCCB breakers, combination GFCI and overload protection RCBO breakers and MCB overload protection circuit breakers. IP30 protection with hinged cover. Cable entry top, bottom and back. **For use with one-pole, two-pole and three-pole circuit breakers.** Includes 100 amp Main switch, Line busbar, Grounding terminal strip, Neutral terminal strip and box accessories.

Blanking plate

Part Number: QBP5

Used for filling unused openings in enclosures.



QBP5



38041

One phase power distribution block.

Part Number: 38041

125 ampere 600 volt ac. DIN rail mount. Line side accepts one #8-2 AWG conductor. Six #14-6 AWG loadside terminals.

