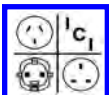


INTERNATIONAL



LIGHT FIXTURES AND CIRCUIT BREAKERS



GFCI & OVERLOAD DIN-RAIL MOUNT CIRCUIT BREAKERS







E-mail: sales@internationalconfig.com

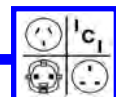
RCCB 240 VOLT 50Hz CIRCUIT BREAKERS

Web site: www.internationalconfig.com

RCCB / RCBO COMBINATION GFCI & OVERLOAD CIRCUIT BREAKERS

MCB OVERLOAD PROTECTION CIRCUIT BREAKERS

	Part Number	Amp Rating	Trip Current	Description
 <p>EAM162V</p>	EAM162V	16	10 mA	European / International GFCI, RCCB double pole circuit breakers. GFCI, RCCB circuit breakers only provide GFCI protection. For overload protection use MCB circuit breakers or combination protection RCBO breakers. DIN rail mount. Box type terminals accepts 1 to 50 mm ² conductors. 2 Module size. Complies with standards: IEC-EN 61008
	EAM162H	16	30 mA	
	EAM252H	25	30 mA	
	EAM252M	25	100 mA	
	EAM402H	40	30 mA	
	EAM402M	40	100 mA	
 <p>EAD16BH30</p>	EAD06BH30	6	30 mA	European / International GFCI, RCBO, B-curve, single pole circuit breakers. GFCI, RCBO circuit breakers provide GFCI and overload protection. DIN rail mount. Box type terminals accepts 1 to 50 mm ² conductors. 1 Module size. Complies with standards: IEC-EN 61009
	EAD10BH30	10	30 mA	
	EAD16BH30	16	30 mA	
	EAD20BH30	20	30 mA	
	EAD25BH30	25	30 mA	
	EAD32BH30	32	30 mA	
	EAD40BH30	40	30 mA	
	EAD45BH30	45	30 mA	
 <p>007879</p>	007879	16	10 mA	European / International GFCI, RCBO, C-curve, single pole plus neutral circuit breakers. GFCI, RCBO circuit breakers provide GFCI and overload protection. DIN rail mount. Box type terminals accepts 1 to 50 mm ² conductors. 2 Module size. Complies with standards: IEC 61009-1, IEC 60947-2
	007886	16	30 mA	
	007887	20	30 mA	
	007888	25	30 mA	
	007889	32	30 mA	
	007890	40	30 mA	
 <p>EAD16B</p>	EAD02B	2	--	European / International MCB (miniature circuit breakers), B-curve, single pole circuit breakers. MCB circuit breakers provide only overload protection. DIN rail mount. Box type terminals accepts 1 to 50 mm ² conductors. 1 Module size. Complies with standards: IEC-EN 60898
	EAD04B	4	--	
	EAD06B	6	--	
	EAD10B	10	--	
	EAD13B	13	--	
	EAD16B	16	--	
	EAD20B	20	--	
	EAD25B	25	--	
	EAD32B	32	--	
	EAD40B	40	--	
	EAD50B	50	--	
	EAD63B	63	--	
 <p>2CU32</p>	2CU16 * **	16	--	European / International MCB (miniature circuit breakers), C-curve, double pole circuit breakers. MCB circuit breakers provide only overload protection. DIN rail mount. Box type terminals accepts 1 to 50 mm ² conductors. 2 Module size. Complies with standards: *IEC-EN 60898-I, VDE 0641-11 **UL 508, CSA 22.2 No. 14
	2CU32 **	32	--	
	2CU40 **	40	--	
	2CU63 **	63	--	
 <p>3CU32</p>	3CU16 * **	16	--	European / International MCB (miniature circuit breakers), C-curve, three pole circuit breakers. MCB circuit breakers provide only overload protection. DIN rail mount. Box type terminals accepts 1 to 50 mm ² conductors. 3 Module size. Complies with standards: *IEC-EN 60898-I, VDE 0641-11 **UL 508, CSA 22.2 No. 14
	3CU32 *	32	--	
	3CU63 *	63	--	



CIRCUIT BREAKER ENCLOSURES AND ACCESSORIES
SURFACE MOUNT ENCLOSURES
RECESS FLUSH MOUNT ENCLOSURES
POWER DISTRIBUTION BLOCKS AND BLANKING PLATES

E-mail: sales@internationalconfig.com

Web site: www.internationalconfig.com

Description

Surface mount enclosure.

Part Number: AN25

IP 40 protection. Cable entry top and bottom. For use with 1 double pole or two single pole breakers. Grounding terminal included.



AN25

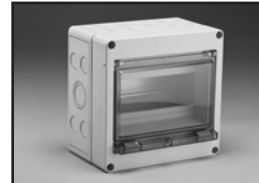


4QEL

Surface mount enclosures.

Part Numbers: 4QEL, 8QEL, 12QEL and 24QEL

Accepts GFCI RCCB breakers, combination GFCI and overload protection RCBO breakers and MCB overload protection circuit breakers. IP54 protection with hinged and gasketed transparent cover. IP65 protection available with optional IP65 cable glands. Cable entry top, bottom and sides. **For use with one-pole, two-pole and three-pole circuit breakers.** Grounding terminal strip, neutral strip, box accessories included.



8QEL



12QEL



24QEL

Surface mount enclosures.

Part Numbers: EAS12, EAS18 and EAS26

Accepts GFCI RCCB breakers, combination GFCI and overload protection RCBO breakers and MCB overload protection circuit breakers. IP30 protection with hinged cover. Cable entry top, bottom and back. **For use with one-pole, two-pole and three-pole circuit breakers.** Includes 100 Amp Main switch, Line busbar, Grounding terminal strip, Neutral terminal strip and box accessories.



EAS12



EAS12F



EAS18



EAS18F



EAS26



EAS26F

Recess mount enclosures.

Part Numbers: EAS12F, EAS18F and EAS26F

Accepts GFCI RCCB breakers, combination GFCI and overload protection RCBO breakers and MCB overload protection circuit breakers. IP30 protection with hinged cover. Cable entry top, bottom and back. **For use with one-pole, two-pole and three-pole circuit breakers.** Includes 100 amp Main switch, Line busbar, Grounding terminal strip, Neutral terminal strip and box accessories.

Blanking plate

Part Number: QBP5

Used for filling unused openings in enclosures.



QBP5

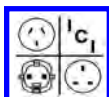


38041

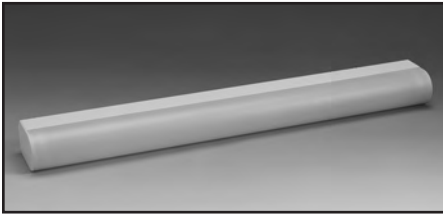
One phase power distribution block.

Part Number: 38041

125 ampere 600 volt ac. DIN rail mount. Line side accepts one #8-2 AWG conductor. Six #14-6 AWG loadside terminals.



FLUORESCENT FIXTURES

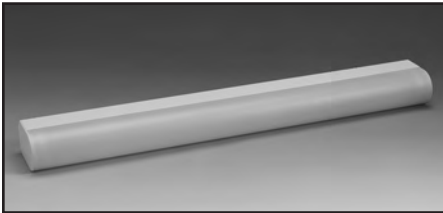


681348

Fluoresecent Light Fixture,
 11 watt, 230 volt, 50Hz, IP44,
 surface mount, aluminum base, opal
 polycarbonate lens, class 1, 335mm long,
 less lamp. European approval and CE
 mark. White.
Fluorescent Lamp 006017



006017

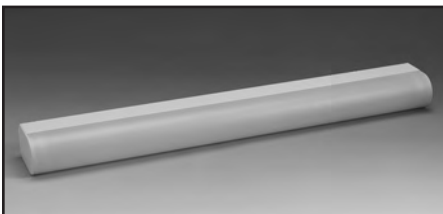


681386

Fluoresecent Light Fixture,
 18 watt, 230 volt, 50Hz, IP44,
 surface mount, aluminum base, opal
 polycarbonate lens, class 1, 631mm long,
 less lamp. European approval and CE
 mark. White.
Fluorescent Lamp 92392



92392



681485

Fluoresecent Light Fixture,
 36 watt, 230 volt, 50Hz, IP44,
 surface mount, aluminum base, opal
 polycarbonate lens, class 1, 1,241 long,
 less lamp. European approval and CE
 mark. White.
Fluorescent Lamp 702708

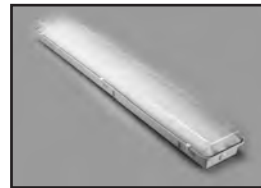


702708



69360

Fluorescent European light fixture,
 36 watt, 230 volt, 50Hz, IP65
 weatherproof, acrylic prismatic lens,
 shock resistant polycarbonate base,
 stainless steel clips, surface mount,
 less lamps. RAL 7035 Gray.
Fluorescent Lamp 702708 (x2)



69355

Flourescent Light Fixture,
 32 watt, 120-277 volt, 50/60Hz, IP65
 weatherproof, acrylic prismatic lens,
 electronic rapid start ballast, polyester
 fiberglass body, neoprene gasketed,
 surface mount, less lamps. Gray.
Fluorescent Lamp F32T8CW (x2)



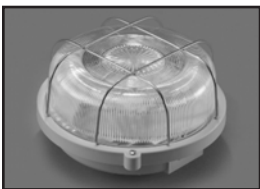
69222-F

Fluorescent light fixture,
 13 watt, 230 volt, 50Hz, IP44,
 oval bulkhead, surface mount
 insulated base, glass lens, steel
 lens guard, less lamp. Gray.
Fluorescent Lamp 69320



69222-MF

Fluorescent light fixture,
 13 watt, 230 volt, 50Hz, IP54, oval
 bulkhead, surface mount, coated
 aluminum base, glass lens, steel
 lens guard, three M20x1.5 threaded
 entries, less lamp. Gray.
Fluorescent Lamp 69320



69214-F

Fluorescent light fixture,
 13 watt, 230 volt, 50Hz, IP44,
 round bulkhead, surface mount
 thermoplastic base, glass lens,
 steel lens guard, 3 conduit /
 cable entries, less lamp. Gray.
Fluorescent Lamp 69320



69214-FLG

Fluorescent light fixture,
 13 watt, 230 volt, 50Hz, IP44,
 round bulkhead, surface mount
 thermoplastic base, glass lens,
 less lens guard, 3 conduit / cable
 entries, less lamp. Gray.
Fluorescent Lamp 69320



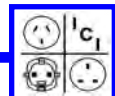
69116

Fluorescent light fixture,
 16 watt, 230 volt, 50Hz, IP44,
 round ceiling light,
 surface mount, opal lens,
 with lamp. White.
Replacement Lamp 69316



69118

Fluorescent light fixture,
 18 watt, 230 volt, 50Hz, IP44,
 round ceiling light,
 surface mount, opal lens,
 with lamp. White.
Replacement Lamp 69318



FLUORESCENT FIXTURES



69128

Fluorescent light fixture,
 28 watt, 230 volt, 50Hz, IP44,
 round ceiling light,
 surface mount, opal lens,
 with lamp. White.
Replacement Lamp 69328



69350

Fluorescent light fixture,
 8 watt, 230 volt, 50/60Hz, IP42,
 "Emergency Lighting" indoor
 fixture, surface mount, battery
 back-up, with lamp. White.
Replacement Lamp 69306



69350-EX

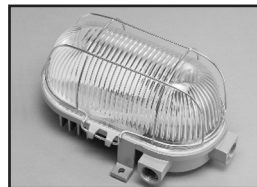
Fluorescent light fixture,
 8 watt, 230 volt, 50/60Hz, IP42,
 "Emergency Exit" indoor fixture,
 surface mount, battery back-up,
 with lamp. White.
Replacement Lamp 69306

INCANDESCENT / FLOURESCENT COMBINATION FIXTURES



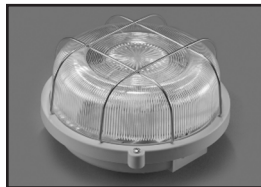
69222

Incandescent light fixture,
 100 watt, 230-250 volt, 50Hz, IP44,
 oval bulkhead, surface mount, insulat-
 ed base, glass lens, gray coated steel
 wire lens guard, less lamp. Gray.
Incand. Lamp 69300 (100 Watt)
Incand. Lamp 69275 (75 Watt)



69222-M

Incandescent light fixture,
 100 watt, 230 volt, 50Hz, IP54, oval
 bulkhead, surface mount, aluminum
 base, glass lens, lens guard, three
 M20x1.5 entries, less lamp. Gray.
Incand. Lamp 69300 (100 Watt)
Incand. Lamp 69275 (75 Watt)



69214

Incandescent light fixture,
 100 watt, 230-250 volt, 50Hz, IP44,
 round bulkhead, surface mount,
 thermoplastic base, glass lens,
 lens guard, less lamp. Gray.
Incand. Lamp 69300 (100 Watt)
Incand. Lamp 69275 (75 Watt)



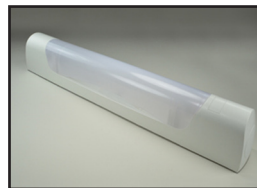
69214-LG

Incandescent light fixture,
 100 watt, 230 volt, 50Hz, IP44, round
 bulkhead, surface moutn, thermo-
 plastic base, glass lens, less lens
 guard, less lamp. Gray.
Incand. Lamp 69300 (100 Watt)
Incand. Lamp 69275 (75 Watt)



69214-MFM

Incandescent light fixture,
 100 watt, 230 volt, 50Hz, IP54,
 round surface mount, metal base,
 opaque glass lens, metal lens
 guard, less lamp. White.
Incand. Lamp 69300 (100 Watt)
Incand. Lamp 69275 (75 Watt)



60620

Incandescent light fixture,
 60 watt, 230 volt, 50Hz, IP23,
 surface mount, strip light fixture,
 thermoplastic base, class 2,
 with lamp. White.
Replacement Lamp 60684



69013 and 69026

Flourescent light bulbs,
 69013: 13W equivalent to 60W
 69026: 26W equivalent to 100W
**Incandescent fixtures:*
 69214, 69214-LG, 69214-MFM
 accepts 69013 or 69026.
**Incandescent fixtures:*
 69222, 69222-M accept only 69013.

HALOGEN FIXTURES



69250

Halogen light fixture,
 400 watt, 230 volt, 50Hz, IP54,
 wall or ceiling mount, aluminum
 housing, baked enamel finish,
 class 1, with lamp. Black.
Replacement Lamp 69324

LED FIXTURES



69222-ML

LED light fixture,
 3x4 watt, 220-240 volt, 50Hz,
 IP54, oval bulkhead, surface
 mount, coated aluminum base,
 frosted prismatic glass lens, steel
 wire lens guard, three M20x1.5
 threaded entries, with lamp. Gray.



69250-P

Halogen light fixture,
 400 watt, 230 volt, 50Hz, IP54,
 portable fixture, 1.8 meter (6 foot)
 power cord with Schuko plug,
 aluminum housing, baked enamel
 finish, class 1, with lamp. Black.
Replacement Lamp 69324

