

IEC 60309 PIN & SLEEVE WIRING DEVICES

- NORTH AMERICAN APPROVED    
- INTERNATIONAL AND EUROPEAN APPROVED     
- UNIVERSAL APPROVED         



Technical Data - Page 178-179 & Weatherproof IP Rating Chart - Page 196



North American, International and European IEC 60309 pin and sleeve devices are manufactured to EN 60309-1 and EN 60309-2 standards. EN 60309-1 specifies general functionality and safety requirements for industrial high-current power connectors. EN 60309-2 specifies power connectors conforming to specific dimensional requirements which permits component interchangeability between IEC 60309 device manufacturers. EN 60309 outlines the utilization of circular housings, various numbers of contact pins and pin arrangements pertaining to specific electric amperage and voltage ratings. The EN 60309-2 standard was developed to create product standardization guidelines for all manufactures of IEC 60309 plugs, connectors, inlets and outlet configurations. Therefore the EN 60309-2 standard has provided a uniform power connection system for industrial electrical equipment anywhere in the world. EN 60309-1, EN 60309-2 standards have been adopted by the European members of CENELEC and are Internationally accepted including in North America.

IEC 60309 wiring devices are manufactured with high quality polyamide 6 material and nickel plated brass contacts to meet the toughest industrial and environmental conditions. IP44 rated devices are splash-proof for indoor use or IP67 waterproof rated for use on outdoor applications directly exposed to the environment.

IEC 60309 high power connection products are commonly used in the following industries. OEM manufacturers of industrial equipment, Data Centers, Construction sites for portable power, Marine environments on ships and shore power connections, Industrial manufacturing and processing facilities of Food, Water, Chemicals Etc, Off shore oil rigs, Mills, foundries, Airports, Sports complexes, TV studios, Concerts and entertainment venues. IEC 60309 devices are suitable for power connection in almost all industries.



IEC 60309 DEVICES, IP44, IP67 (4H)
2 Pole 3 Wire Grounding
 20 Amp 120 Volt A.C. - North American Rated
 C(UL)US LISTED

Yellow Color



E-mail: sales@internationalconfig.com
 Web site: www.internationalconfig.com



SPLASHPROOF IP44 **WATERTIGHT IP67**

DEVICE SPECIFICATION DOCUMENTS
 AVAILABLE ON OUR WEBSITE



888-21000-NS



888-2156-NS



888-31000-NS



888-3156-NS



888-13000-NS



888-1371-NS



888-1216-NS



888-1265-NS



888-110-NS



888-1132-NS



888-611316



888-71324-NS



888-6134-NS



999-613, 999-613-WP

Cable Mounting Plugs

888-21000-NS Splashproof Plug, IP44 Rated.

888-2156-NS Watertight Plug, IP67 Rated.

Compression Strain Relief & Cord Grip.

Nylon (Polyamide 6) Body. Color: Yellow.

Contacts: Nickel Plated Brass, Brass.

Operating Temp: -25°C to + 80°C

Cable Mounting Connectors

888-31000-NS Splashproof Connector, IP44 Rated.

888-3156-NS Watertight Connector, IP67 Rated.

Compression Strain Relief & Cord Grip.

Nylon (Polyamide 6) Body. Color: Yellow.

Contacts: Nickel Plated Brass, Brass.

Operating Temp: -25°C to + 80°C

Panel Mount Receptacles, Straight Type

888-13000-NS Splashproof Receptacle, IP44 Rated.

888-1371-NS Watertight Receptacle, IP67 Rated.

Nylon (Polyamide 6) Body. Color: Yellow.

Contacts: Nickel Plated Brass, Brass.

Operating Temp: -25°C to + 80°C

Panel Mount Receptacles, Angled Type

888-1216-NS Splashproof Receptacle, IP44 Rated.

888-1265-NS Watertight Receptacle, IP67 Rated.

Nylon (Polyamide 6) Body. Color: Yellow.

Contacts: Nickel Plated Brass, Brass.

Operating Temp: -25°C to + 80°C

Surface Mount Receptacles with Box

888-110-NS Splashproof Receptacle, IP44 Rated.

888-1132-NS Watertight Receptacle, IP67 Rated.

Nylon (Polyamide 6) Body. Color: Yellow.

Contacts: Nickel Plated Brass, Brass.

Operating Temp: -25°C to + 80°C

Surface Mount Inlets, Down Angled Type

888-611316 Splashproof Inlet, IP44 Rated.

888-71324-NS Watertight Inlet, IP67 Rated.

Nylon (Polyamide 6) Body. Color: Yellow.

Contacts: Nickel Plated Brass, Brass.

Operating Temp: -25°C to + 80°C

Panel Mount Inlet, Straight Type

888-6134-NS Splashproof Receptacle, IP44 Rated.

Nylon (Polyamide 6) Body. Color: Yellow.

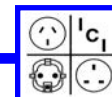
Contacts: Nickel Plated Brass, Brass.

Operating Temp: -25°C to + 80°C

Plug and Inlet Closure Cap.

999-613 Color: Gray

999-613-WP Watertight Cap, IP67 Rated. Color: Gray



**IEC 60309 DEVICES, IP44, IP67 (4H)
2 Pole 3 Wire Grounding**
30 Amp 120 Volt A.C. - North American Rated
C(UL)US LISTED

Yellow Color



E-mail: sales@internationalconfig.com

Web site: www.internationalconfig.com



DEVICE SPECIFICATION DOCUMENTS
AVAILABLE ON OUR WEBSITE

SPLASHPROOF IP44

WATERTIGHT IP67

Cable Mounting Plugs

888-21012-NS Splashproof Plug, IP44 Rated.

888-2168-NS Watertight Plug, IP67 Rated.

Compression Strain Relief & Cord Grip.

Nylon (Polyamide 6) Body. Color: Yellow.

Contacts: Nickel Plated Brass, Brass.

Operating Temp: -25°C to + 80°C



888-21012-NS



888-2168-NS

Cable Mounting Connectors

888-31012-NS Splashproof Connector, IP44 Rated.

888-3168-NS Watertight Connector, IP67 Rated.

Compression Strain Relief & Cord Grip.

Nylon (Polyamide 6) Body. Color: Yellow.

Contacts: Nickel Plated Brass, Brass.

Operating Temp: -25°C to + 80°C



888-31012-NS



888-3168-NS

Panel Mount Receptacles, Straight Type

888-13006-NS Splashproof Receptacle, IP44 Rated.

888-13023-NS Watertight Receptacle, IP67 Rated.

Nylon (Polyamide 6) Body. Color: Yellow.

Contacts: Nickel Plated Brass, Brass.

Operating Temp: -25°C to + 80°C



888-13006-NS



888-13023-NS

Panel Mount Receptacles, Angled Type

888-1228-NS Splashproof Receptacle, IP44 Rated.

888-42324-NS Watertight Receptacle, IP67 Rated.

Nylon (Polyamide 6) Body. Color: Yellow.

Contacts: Nickel Plated Brass, Brass.

Operating Temp: -25°C to + 80°C



888-1228-NS



888-42324-NS

Surface Mount Receptacles with Box

888-1113-NS Splashproof Receptacle, IP44 Rated.

888-1144-NS Watertight Receptacle, IP67 Rated.

Nylon (Polyamide 6) Body. Color: Yellow.

Contacts: Nickel Plated Brass, Brass.

Operating Temp: -25°C to + 80°C



888-1113-NS



888-1144-NS

Surface Mount Inlets, Down Angled Type

888-631316 Splashproof Inlet, IP44 Rated.

888-72324-NS Watertight Inlet, IP67 Rated.

Nylon (Polyamide 6) Body. Color: Yellow.

Contacts: Nickel Plated Brass, Brass.

Operating Temp: -25°C to + 80°C



888-631316



888-72324-NS

Panel Mount Inlet, Straight Type

888-6234-NS Splashproof Receptacle, IP44 Rated.

Nylon (Polyamide 6) Body. Color: Yellow.

Contacts: Nickel Plated Brass, Brass.

Operating Temp: -25°C to + 80°C



888-6234-NS

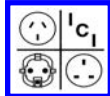


999-623, 999-623-WP

Plug and Inlet Closure Cap.

999-623 Color: Gray

999-623-WP Watertight Cap, IP67 Rated. Color: Gray



© 2014 International Configurations, Inc. Entire contents of this catalog copyrighted. www.InternationalConfig.com

International Configurations, Inc. • P.O. Box 3374 • Enfield, Connecticut 06083 • TEL (860) 749-6380 • FAX (860) 749-2985 171

IEC 60309 DEVICES, IP44, IP67 (6H) 2 Pole 3 Wire Grounding

20 Amp 250 Volt A.C. - North American Rated
16 Amp 220-250 Volt A.C. - European Rated

Blue Color



E-mail: sales@internationalconfig.com

Web site: www.internationalconfig.com

UNIVERSAL
APPROVED



SPLASHPROOF IP44

WATERTIGHT IP67

DEVICE SPECIFICATION DOCUMENTS
AVAILABLE ON OUR WEBSITE



888-2126-NS



888-2126-NS-WT



888-3126-NS



888-3157-NS



888-13001-NS or 888-410306



888-1372-NS



888-1217-NS



888-1266-NS



888-111-NS



888-1133-NS



888-611306



888-71326-NS



888-6136-NS



999-613, 999-613-WP

Cable Mounting Plugs

888-2126-NS Splashproof Plug, IP44 Rated.

888-2126-NS-WT Watertight Plug, IP67 Rated.

Compression Strain Relief & Cord Grip.

Nylon (Polyamide 6) Body. Color: Blue.

Contacts: Nickel Plated Brass, Brass.

Operating Temp: -25°C to + 80°C

Cable Mounting Connectors

888-3126-NS Splashproof Connector, IP44 Rated.

888-3157-NS Watertight Connector, IP67 Rated.

Compression Strain Relief & Cord Grip.

Nylon (Polyamide 6) Body. Color: Blue.

Contacts: Nickel Plated Brass, Brass.

Operating Temp: -25°C to + 80°C

Panel Mount Receptacles, Straight Type

888-13001-NS Splashproof Receptacle, IP44 Rated.

888-410306 Splashproof Receptacle, IP44 Rated.

888-1372-NS Watertight Receptacle, IP67 Rated.

Nylon (Polyamide 6) Body. Color: Blue.

Contacts: Nickel Plated Brass, Brass.

Operating Temp: -25°C to + 80°C

Panel Mount Receptacles, Angled Type

888-1217-NS Splashproof Receptacle, IP44 Rated.

888-1266-NS Watertight Receptacle, IP67 Rated.

Nylon (Polyamide 6) Body. Color: Blue.

Contacts: Nickel Plated Brass, Brass.

Operating Temp: -25°C to + 80°C

Surface Mount Receptacles with Box

888-111-NS Splashproof Receptacle, IP44 Rated.

888-1133-NS Watertight Receptacle, IP67 Rated.

Nylon (Polyamide 6) Body. Color: Blue.

Contacts: Nickel Plated Brass, Brass.

Operating Temp: -25°C to + 80°C

Surface Mount Inlets, Down Angled Type

888-611306 Splashproof Inlet, IP44 Rated.

888-71326-NS Watertight Inlet, IP67 Rated.

Nylon (Polyamide 6) Body. Color: Blue.

Contacts: Nickel Plated Brass, Brass.

Operating Temp: -25°C to + 80°C

Panel Mount Inlet, Straight Type

888-6136-NS Splashproof Receptacle, IP44 Rated.

Nylon (Polyamide 6) Body. Color: Blue.

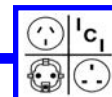
Contacts: Nickel Plated Brass, Brass.

Operating Temp: -25°C to + 80°C

Plug and Inlet Closure Cap.

999-613 Color: Gray

999-613-WP Watertight Cap, IP67 Rated. Color: Gray



IEC 60309 DEVICES, IP44, IP67 (6H)

4 Pole 5 Wire Grounding, 3 Phase

20 Amp 200-415 Volt A.C. - N. American Rated

16 Amp 220/380-240/415 Volt A.C. - European Rated

Red Color



E-mail: sales@internationalconfig.com

Web site: www.internationalconfig.com

UNIVERSAL
APPROVED



DEVICE SPECIFICATION DOCUMENTS
AVAILABLE ON OUR WEBSITE

SPLASHPROOF IP44

WATERTIGHT IP67

Cable Mounting Plugs

888-203-NS Splashproof Plug, IP44 Rated.

888-2167-NS Watertight Plug, IP67 Rated.

Compression Strain Relief & Cord Grip.

Nylon (Polyamide 6) Body. Color: Red.

Contacts: Nickel Plated Brass, Brass.

Operating Temp: -25°C to + 80°C



888-203-NS



888-2167-NS

Cable Mounting Connectors

888-303-NS Splashproof Connector, IP44 Rated.

888-3167-NS Watertight Connector, IP67 Rated.

Compression Strain Relief & Cord Grip.

Nylon (Polyamide 6) Body. Color: Red.

Contacts: Nickel Plated Brass, Brass.

Operating Temp: -25°C to + 80°C



888-303-NS



888-3167-NS

Panel Mount Receptacles, Straight Type

888-13005-NS Splashproof Receptacle, IP44 Rated.

888-1382-NS Watertight Receptacle, IP67 Rated.

Nylon (Polyamide 6) Body. Color: Red.

Contacts: Nickel Plated Brass, Brass.

Operating Temp: -25°C to + 80°C



888-13005-NS



888-1382-NS

Panel Mount Receptacles, Angled Type

888-1227-NS Splashproof Receptacle, IP44 Rated.

888-1276-NS Watertight Receptacle, IP67 Rated.

Nylon (Polyamide 6) Body. Color: Red.

Contacts: Nickel Plated Brass, Brass.

Operating Temp: -25°C to + 80°C



888-1227-NS



888-1276-NS

Surface Mount Receptacles with Box

888-102-NS Splashproof Receptacle, IP44 Rated.

888-1043-NS Watertight Receptacle, IP67 Rated.

Nylon (Polyamide 6) Body. Color: Red.

Contacts: Nickel Plated Brass, Brass.

Operating Temp: -25°C to + 80°C



888-102-NS



888-1043-NS

Surface Mount Inlets, Down Angled Type

888-2757-NS Splashproof Inlet, IP44 Rated.

888-2793-NS Watertight Inlet, IP67 Rated.

Nylon (Polyamide 6) Body. Color: Red.

Contacts: Nickel Plated Brass, Brass.

Operating Temp: -25°C to + 80°C



888-2757-NS



888-2793-NS

Panel Mount Inlet, Straight Type

888-7156-NS Splashproof Receptacle, IP44 Rated.

Nylon (Polyamide 6) Body. Color: Red.

Contacts: Nickel Plated Brass, Brass.

Operating Temp: -25°C to + 80°C

Plug and Inlet Closure Cap.

999-615 Color: Gray

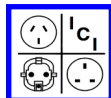
999-615-WP Watertight Cap, IP67 Rated. Color: Gray



888-7156-NS



999-615, 999-615-WP



IEC 60309 DEVICES, IP44, IP67 (6H) 2 Pole 3 Wire Grounding

30 Amp 250 Volt A.C. - North American Rated
32 Amp 220-250 Volt A.C. - European Rated

Blue Color



E-mail: sales@internationalconfig.com

Web site: www.internationalconfig.com

UNIVERSAL
APPROVED



SPLASHPROOF IP44

WATERTIGHT IP67

DEVICE SPECIFICATION DOCUMENTS
AVAILABLE ON OUR WEBSITE



888-2138-NS



888-2169-NS



888-3138-NS



888-3169-NS



888-13007-NS



888-13024-NS



888-1229-NS



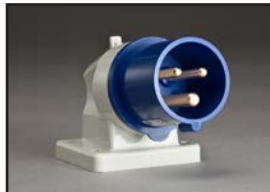
888-42326-NS



888-1114-NS



888-3227-NS



888-631306



888-72326-NS



888-6236-NS



999-623, 999-623-WP

Cable Mounting Plugs

888-2138-NS Splashproof Plug, IP44 Rated.

888-2169-NS Watertight Plug, IP67 Rated.

Compression Strain Relief & Cord Grip.

Nylon (Polyamide 6) Body. Color: Blue.

Contacts: Nickel Plated Brass, Brass.

Operating Temp: -25°C to + 80°C

Cable Mounting Connectors

888-3138-NS Splashproof Connector, IP44 Rated.

888-3169-NS Watertight Connector, IP67 Rated.

Compression Strain Relief & Cord Grip.

Nylon (Polyamide 6) Body. Color: Blue.

Contacts: Nickel Plated Brass, Brass.

Operating Temp: -25°C to + 80°C

Panel Mount Receptacles, Straight Type

888-13007-NS Splashproof Receptacle, IP44 Rated.

888-13024-NS Watertight Receptacle, IP67 Rated.

Nylon (Polyamide 6) Body. Color: Blue.

Contacts: Nickel Plated Brass, Brass.

Operating Temp: -25°C to + 80°C

Panel Mount Receptacles, Angled Type

888-1229-NS Splashproof Receptacle, IP44 Rated.

888-42326-NS Watertight Receptacle, IP67 Rated.

Nylon (Polyamide 6) Body. Color: Blue.

Contacts: Nickel Plated Brass, Brass.

Operating Temp: -25°C to + 80°C

Surface Mount Receptacles with Box

888-1114-NS Splashproof Receptacle, IP44 Rated.

888-3227-NS Watertight Receptacle, IP67 Rated.

Nylon (Polyamide 6) Body. Color: Blue.

Contacts: Nickel Plated Brass, Brass.

Operating Temp: -25°C to + 80°C

Surface Mount Inlets, Down Angled Type

888-631306 Splashproof Inlet, IP44 Rated.

888-72326-NS Watertight Inlet, IP67 Rated.

Nylon (Polyamide 6) Body. Color: Blue.

Contacts: Nickel Plated Brass, Brass.

Operating Temp: -25°C to + 80°C

Panel Mount Inlet, Straight Type

888-6236-NS Splashproof Receptacle, IP44 Rated.

Nylon (Polyamide 6) Body. Color: Blue.

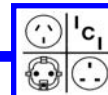
Contacts: Nickel Plated Brass, Brass.

Operating Temp: -25°C to + 80°C

Plug and Inlet Closure Cap.

999-623 Color: Gray

999-623-WP Watertight Cap, IP67 Rated. Color: Gray



IEC 60309 DEVICES, IP44, IP67 (6H)

4 Pole 5 Wire Grounding, 3 Phase

30 Amp 200-415 Volt A.C. - N. American Rated

32 Amp 220/380-240/415 Volt A.C. - European Rated

Red Color



E-mail: sales@internationalconfig.com

Web site: www.internationalconfig.com

UNIVERSAL
APPROVED



DEVICE SPECIFICATION DOCUMENTS
AVAILABLE ON OUR WEBSITE

SPLASHPROOF IP44

WATERTIGHT IP67

Cable Mounting Plugs

888-231-NS Splashproof Plug, IP44 Rated.

888-2179-NS Watertight Plug, IP67 Rated.

Compression Strain Relief & Cord Grip.

Nylon (Polyamide 6) Body. Color: Red.

Contacts: Nickel Plated Brass, Brass.

Operating Temp: -25°C to + 80°C



888-231-NS



888-2179-NS

Cable Mounting Connectors

888-331-NS Splashproof Connector, IP44 Rated.

888-3179-NS Watertight Connector, IP67 Rated.

Compression Strain Relief & Cord Grip.

Nylon (Polyamide 6) Body. Color: Red.

Contacts: Nickel Plated Brass, Brass.

Operating Temp: -25°C to + 80°C



888-331-NS



888-3179-NS

Panel Mount Receptacles, Straight Type

888-1333-NS Splashproof Receptacle, IP44 Rated.

888-1370-NS Watertight Receptacle, IP67 Rated.

Nylon (Polyamide 6) Body. Color: Red.

Contacts: Nickel Plated Brass, Brass.

Operating Temp: -25°C to + 80°C



888-1333-NS



888-1370-NS

Panel Mount Receptacles, Angled Type

888-1239-NS Splashproof Receptacle, IP44 Rated.

888-1288-NS Watertight Receptacle, IP67 Rated.

Nylon (Polyamide 6) Body. Color: Red.

Contacts: Nickel Plated Brass, Brass.

Operating Temp: -25°C to + 80°C



888-1239-NS



888-1288-NS

Surface Mount Receptacles with Box

888-103-NS Splashproof Receptacle, IP44 Rated.

888-1155-NS Watertight Receptacle, IP67 Rated.

Nylon (Polyamide 6) Body. Color: Red.

Contacts: Nickel Plated Brass, Brass.

Operating Temp: -25°C to + 80°C



888-103-NS



888-1155-NS

Surface Mount Inlets, Down Angled Type

888-2769-NS Splashproof Inlet, IP44 Rated.

888-27005-NS Watertight Inlet, IP67 Rated.

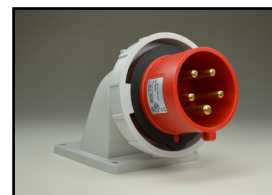
Nylon (Polyamide 6) Body. Color: Red.

Contacts: Nickel Plated Brass, Brass.

Operating Temp: -25°C to + 80°C



888-2769-NS



888-27005-NS

Panel Mount Inlet, Straight Type

888-6256-NS Splashproof Receptacle, IP44 Rated.

Nylon (Polyamide 6) Body. Color: Red.

Contacts: Nickel Plated Brass, Brass.

Operating Temp: -25°C to + 80°C

Plug and Inlet Closure Cap.

999-625 Color: Gray

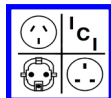
999-625-WP Watertight Cap, IP67 Rated. Color: Gray



888-6256-NS



999-625, 999-625-WP



IEC 60309 DEVICES, IP44, IP67 (6H) 2 Pole 3 Wire Grounding

60 Amp 250 Volt A.C. - North American Rated
63 Amp 200-250 Volt A.C. - European Rated

Blue Color



E-mail: sales@internationalconfig.com

Web site: www.internationalconfig.com

UNIVERSAL
APPROVED



SPLASHPROOF IP44

WATERTIGHT IP67

DEVICE SPECIFICATION DOCUMENTS
AVAILABLE ON OUR WEBSITE



888-260306 or 888-261306



888-269306



888-360306 or 888-361306



888-369306



888-460306



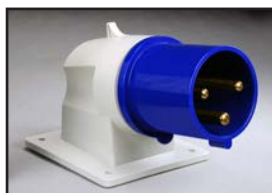
888-469306



888-560306



888-569306



888-661306



888-669306



999-635



999-635-WP

Cable Mounting Plugs

888-260306 Splashproof Plug, IP44 Rated.

888-261306 Splashproof Plug, IP44 Rated.

888-269306 Watertight Plug, IP67 Rated.

Compression Strain Relief & Cord Grip.

Nylon (Polyamide 6) Body. Color: Blue.

Contacts: Nickel Plated Brass, Brass.

Operating Temp: -25°C to + 90°C

Cable Mounting Connectors

888-360306 Splashproof Connector, IP44 Rated.

888-361306 Splashproof Connector, IP44 Rated.

888-369306 Watertight Connector, IP67 Rated.

Compression Strain Relief & Cord Grip.

Nylon (Polyamide 6) Body. Color: Blue.

Contacts: Nickel Plated Brass, Brass.

Operating Temp: -25°C to + 90°C

Panel Mount Receptacles, Straight Type

888-460306 Splashproof Receptacle, IP44 Rated.

888-469306 Watertight Receptacle, IP67 Rated.

Nylon (Polyamide 6) Body. Color: Blue.

Contacts: Nickel Plated Brass, Brass.

Operating Temp: -25°C to + 90°C

Panel Mount Receptacles, Angled Type

888-560306 Splashproof Receptacle, IP44 Rated.

888-569306 Watertight Receptacle, IP67 Rated.

Nylon (Polyamide 6) Body. Color: Blue.

Contacts: Nickel Plated Brass, Brass.

Operating Temp: -25°C to + 90°C

Surface Mount Inlets, Down Angled Type

888-661306 Splashproof Inlet, IP44 Rated.

888-669306 Watertight Inlet, IP67 Rated.

Nylon (Polyamide 6) Body. Color: Blue.

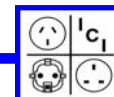
Contacts: Nickel Plated Brass, Brass.

Operating Temp: -25°C to + 90°C

Plug and Inlet Closure Cap.

999-635 Color: Gray

999-635-WP Watertight Cap, IP67 Rated. Color: Gray



IEC 60309 DEVICES, IP44, IP67 (6H)

4 Pole 5 Wire Grounding, 3 Phase

60 Amp 380-415V, 400 Volt A.C. - N. American Rated

63 Amp 220/380-240/415 Volt A.C. - European Rated

Red Color



E-mail: sales@internationalconfig.com

Web site: www.internationalconfig.com

UNIVERSAL
APPROVED



DEVICE SPECIFICATION DOCUMENTS
AVAILABLE ON OUR WEBSITE

SPLASHPROOF IP44

WATERTIGHT IP67

Cable Mounting Plugs

888-260 Splashproof Plug, IP44 Rated.

888-2189 Watertight Plug, IP67 Rated.

Compression Strain Relief & Cord Grip.

Nylon (Polyamide 6) Body. Color: Red.

Contacts: Nickel Plated Brass, Brass.

Operating Temp: -25°C to + 90°C



888-260



888-2189

Cable Mounting Connectors

888-360 Splashproof Connector, IP44 Rated.

888-3124 Watertight Connector, IP67 Rated.

Compression Strain Relief & Cord Grip.

Nylon (Polyamide 6) Body. Color: Red.

Contacts: Nickel Plated Brass, Brass.

Operating Temp: -25°C to + 90°C



888-360



888-3124

Panel Mount Receptacles, Straight Type

888-460 Splashproof Receptacle, IP44 Rated.

888-469 Watertight Receptacle, IP67 Rated.

Nylon (Polyamide 6) Body. Color: Red.

Contacts: Nickel Plated Brass, Brass.

Operating Temp: -25°C to + 90°C



888-460



888-469

Panel Mount Receptacles, Angled Type

888-560 Splashproof Receptacle, IP44 Rated.

888-129 Watertight Receptacle, IP67 Rated.

Nylon (Polyamide 6) Body. Color: Red.

Contacts: Nickel Plated Brass, Brass.

Operating Temp: -25°C to + 90°C



888-560



888-129

Surface Mount Receptacles with Box

888-161 Splashproof Receptacle, IP44 Rated.

888-169 Watertight Receptacle, IP67 Rated.

Nylon (Polyamide 6) Body. Color: Red.

Contacts: Nickel Plated Brass, Brass.

Operating Temp: -25°C to + 90°C



888-161



888-169

Surface Mount Inlet, Down Angled Type

888-27017 Watertight Inlet, IP67 Rated.

Suitable For Use With IP44 & IP67 Devices.

Panel Mount Inlet, Straight Type

888-665 Watertight Inlet, IP67 Rated.

Suitable For Use With IP44 & IP67 Devices.

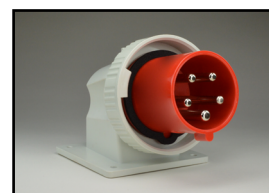
Nylon (Polyamide 6) Body. Color: Red.

Contacts: Nickel Plated Brass, Brass.

Operating Temp: -25°C to + 90°C



999-635



888-27017

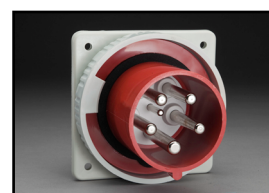
Plug and Inlet Closure Cap.

999-635 Color: Gray

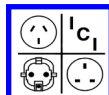
999-635-WP Watertight Cap, IP67 Rated. Color: Gray.



999-635-WP



888-665



IEC 60309 DEVICES, IP67 (6H) 4 Pole 5 Wire Grounding, 3 Phase

100 Amp 380-415V, 400 Volt A.C. - N. American Rated
125 Amp 220/380-240/415 Volt A.C. - European Rated

Red Color



E-mail: sales@internationalconfig.com

Web site: www.internationalconfig.com

UNIVERSAL
APPROVED



WATERTIGHT IP67



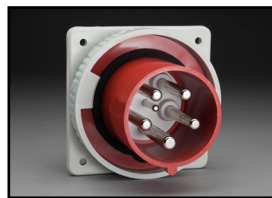
888-2199



888-3199



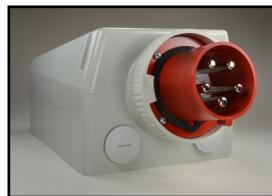
888-479



888-679



888-12108



888-678



888-179



999-645-WP

DEVICE SPECIFICATION DOCUMENTS
AVAILABLE ON OUR WEBSITE

Cable Mounting Plug

888-2199 Watertight Plug, IP67 Rated.

Cable Mounting Connector

888-3199 Watertight Connector, IP67 Rated.

Compression Strain Relief & Cord Grip.

Nylon (Polyamide 6) Body. Color: Red.

Contacts: Nickel Plated Brass, Brass.

Operating Temp: -25°C to + 90°C

Panel Mount Receptacle, Straight Type

888-479 Watertight Receptacle, IP67 Rated.

Panel Mount Inlet, Straight Type

888-679 Watertight Inlet, IP67 Rated.

Compression Strain Relief & Cord Grip.

Nylon (Polyamide 6) Body. Color: Red.

Contacts: Nickel Plated Brass, Brass.

Operating Temp: -25°C to + 90°C

Panel Mount Receptacle, Angled Type

888-12108 Watertight Receptacle, IP67 Rated.

Surface Mount Inlet with Box

888-678 Watertight Inlet, IP67 Rated.

Nylon (Polyamide 6) Body. Color: Red.

Contacts: Nickel Plated Brass, Brass.

Operating Temp: -25°C to + 90°C

Surface Mount Receptacle with Box

888-179 Watertight Receptacle, IP67 Rated.

Nylon (Polyamide 6) Body. Color: Red.

Contacts: Nickel Plated Brass, Brass.

Operating Temp: -25°C to + 90°C

Plug and Inlet Closure Cap.

999-645-WP Watertight Cap, IP67 Rated. Color: Gray.

IEC 60309 PIN AND SLEEVE TECHNICAL DATA

Electrical

Insulation Resistance:

500V for 1 Min. Resistance $\geq 5M \Omega$

Dielectric Voltage Withstand:

3000V for 1 Min.

Current Interrupting:

Certified for current interrupting at full rated current and voltage.

Material

Housing:

Polyamide 6 - High impact and abrasion resistant. Resistant to oil, petrol, most acids and alkalines.

Contacts:

Copper-Zinc Alloy, Nickel Plated Brass, Brass.

Contact Terminals:

Copper-Zinc Alloy, Nickel Plated Brass, Brass, Steel.

Environmental

Temperature Range:

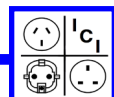
16-32 Ampere Devices (-25°C to +80°C), 60-125 Ampere Devices (-25°C to +90°C)

Temperature Resistance:

Up to 1 hour +100°C

Flamability:

Self-extinguishing per IEC 309-1, clause 27. V-2 or better per UL94 or CSA22.2 No. 0.6.



IEC 60309 PIN & SLEEVE WIRING DEVICES

E-mail: sales@internationalconfig.com

Configuration Electrical Ratings

Web site: www.internationalconfig.com

Configuration Weatherproof Rating Chart - See Page 196

IEC 60309 - CEE 17 configurations are HEAVY DUTY plugs and receptacles of a pin and sleeve design and have a specific rating for each configuration. They are not interchangeable with configurations of a different rating. Unlike "NATIONAL" type plug and receptacle configurations that are used in a general geographic area or specific country, the IEC 60309 - CEE 17 are recognized in many countries of the world for use on heavy duty equipment. This recognition and acceptance in various countries allows electrical equipment manufacturers to standardize on plugs and receptacles used on heavy duty equipment intended for domestic and export markets.

IEC 60309 - CEE 17 devices are rated 16 ampere, 32 ampere, 63 ampere, 125 ampere in 100/130 volts, 200/250 volts, 380/415 volts and are available in 2 pole 3 wire, 3 pole 4 wire and 4 pole 5 wire grounding configurations.

These units are approved by various testing and standards agencies and are ideal for application on large computers, machine tools, welders, industrial environments and equipment.

Position of Grounding (Earth) Contacts

Plugs are provided with a nose (key) and this key mates with the keyway of the outlet. This ensures that the contacts are correctly aligned. The position of the grounding contact relative to the keyway depends on the electrical rating of the plug and outlet. The grounding contact positions are related to the hours of a clock, as shown below.

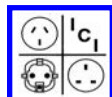
The grounding contact pin has a larger diameter than the other pins. This prevents the possibility of mating the ground pin to a phase contact.

VOLTAGE	FREQUENCY (HERTZ)	NUMBER OF POLES	POSITION OF GRND. (EARTH) CONTACT	COLOR
100-130 V	50/60	2P+E (2 POLE 3 WIRE GROUNDING)	4H	YELLOW
200-250 V	50/60	2P+E (2 POLE 3 WIRE GROUNDING)	6H	BLUE
380-415 V	50/60	2P+E (2 POLE 3 WIRE GROUNDING)	9H	RED
200-250 V	50/60	3P+E (3 POLE 4 WIRE GROUNDING)	9H	BLUE
380-415 V	50/60	3P+E (3 POLE 4 WIRE GROUNDING)	6H	RED
120/280 V 144/250 V	50/60	3P+N+E (4 POLE 5 WIRE GROUNDING)	9H	BLUE
200/346 V 240/415 V	50/60	3P+N+E (4 POLE 5 WIRE GROUNDING)	6H	RED

Clock face position of the protective contact and colour indicator
Viewed from the front of the connector sockets to the contact socket

	4 h	9 h	6 h	11 h	7 h	5 h	12 h	1 h	10 h	2 h	3 h	8 h
FREQUENCY (Hz)	50-60	50-60	50-60	60	50-60	50-60	50-60	-	100-300	OVER 300 TO 500	50-60	
VOLTAGE (V)	57/100 TO 75/130	120/208 TO 144/250	200/346 TO 240/415	250/400 TO 265/460	277/480 TO 288/500	347/600 TO 400/690		OVER 50	OVER 50	OVER 50	220/380 TO 250/440 16 + 32 A	
5-pole 3-pole + N + ⊕												
VOLTAGE (V)	100-130	200-250	380-415	440-460	480-500	600-690	VOLTAGE ACCORDING TO ISOLATING TRANSFORMER*		OVER 50	OVER 50	380-440 ONLY FOR 16 + 32 A	
4-pole 3-pole + ⊕												
VOLTAGE (V)	100-130	380-415	200-250		480-500	277*	VOLTAGE ACCORDING TO ISOLATING TRANSFORMER*		*		OVER 50 TO 250 DC	OVER 250 DC
3-pole 2-pole + ⊕												

63 A + 125 A plug connections with pilot contact



IEC 60309 - CEE 17 - IP44 Splashproof Plugs

888-Part Numbers

UL, CSA, European & International
Universal Approvals

999-Part Numbers

European & International
Approvals

E-mail: sales@internationalconfig.com

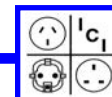
Web site: www.internationalconfig.com



Plug and Inlet Closure Caps. Fits 999- & 888- Devices.
 16A / 20 Amp 2P+E Dust Cap P/N 999-613, P/N 999-613-WP
 16A / 20 Amp 3P+E Dust Cap P/N 999-614, P/N 999-614-WP
 16A / 20 Amp 3P+N+E Dust Cap P/N 999-615, P/N 999-615-WP
 32A / 30 Amp 2P+E, 3P+E Dust Cap P/N 999-623, P/N 999-623-WP
 32A / 30 Amp 3P+N+E Dust Cap P/N 999-625, P/N 999-625-WP
 63A / 60 Amp Dust Cap P/N 999-635
 125A / 100 Amp Dust Cap P/N 999-645
 63A / 60 Amp IP67 Watertight Cap P/N 999-635-WP
 125A / 100 Amp IP67 Watertight Cap P/N 999-645-WP

50/60 Hertz Hz	IEC EN 60309-1 IEC EN 60309-2 UL 1682 C22.2 No. 182.1	BS 4343 SABS 1239 VDE 0623 DIN 49462/63	Visit our web site to obtain dimensional product prints and specification data for part numbers listed below. Use the "Search by Part Number" field located on our homepage. Contact us for data sheets and specifications if the item you searched for is not displayed.			
VOLTAGE	AMPS	POLES	GROUND POSITION	DEVICE COLOR	PART NUMBER	DESCRIPTION
110-130 V	16 A	2 P + E	4H	Yellow	999-21000-NS	Plug, IP44, European Approved
110-130 V	32 A	2 P + E	4H	Yellow	999-21012-NS	Plug, IP44, European Approved
120 V	20 A	2 P + E	4H	Yellow	888-21000-NS	Plug, IP44, UL & CSA Listed
120 V	30 A	2 P + E	4H	Yellow	888-21012-NS	Plug, IP44, UL & CSA Listed
220/250 V	16A / 20A	2 P + E	6H	Blue	888-2126-NS	Plug, IP44, UL, CSA & European Listed
220/250 V	16 A	3 P + E	9H	Blue	999-21004-NS	Plug, IP44, European Approved
120/208-144/250 V	16 A	3 P + N + E	9H	Blue	999-21010-NS	Plug, IP44, European Approved
220/250 V	32A / 30A	2 P + E	6H	Blue	888-2138-NS	Plug, IP44, UL, CSA & European Listed
220/250 V	32 A	3 P + E	9H	Blue	999-21016-NS	Plug, IP44, European Approved
120/208-144/250 V	32 A	3 P + N + E	9H	Blue	999-21022-NS	Plug, IP44, European Approved
220/250 V	63A / 60A	2 P + E	6H	Blue	888-260306	Plug, IP44, UL, CSA & European Listed
220/250 V	63 A	3 P + E	9H	Blue		
120/208-144/250 V	63 A	3 P + N + E	9H	Blue		
220/250 V	125 A	2 P + E	6H	Blue		
220/250 V	125 A	3 P + E	9H	Blue		
120/208-144/250 V	125 A	3 P + N + E	9H	Blue		
380/415 V	16 A	2 P + E	9H	Red	999-21002-NS	Plug, IP44, European Approved
380/415 V	16 A	3 P + E	6H	Red	888-21005-NS	Plug, IP44, UL, CSA & European Listed
220/380-240/415 V	16A / 20A	3 P + N + E	6H	Red	888-203-NS	Plug, IP44, UL, CSA & European Listed
380/415 V	32 A	2 P + E	9H	Red	999-21014-NS	Plug, IP44, European Approved
380/415 V	32 A	3 P + E	6H	Red	999-21017-NS	Plug, IP44, European Approved
220/380-240/415 V	32A / 30A	3 P + N + E	6H	Red	888-231-NS	Plug, IP44, UL, CSA & European Listed
380/415 V	63 A	2 P + E	9H	Red		
380/415 V	63 A	3 P + E	6H	Red		
220/380-240/415 V	63A / 60A	3 P + N + E	6H	Red	888-260	Plug, IP44, UL, CSA & European Listed
380/415 V	125 A	2 P + E	9H	Red		
380/415 V	125 A	3 P + E	6H	Red		
220/380-240/415 V	125A / 100A	3 P + N + E	6H	Red		

© 2014 International Configurations, Inc. Entire contents of this catalog copyrighted. www.InternationalConfig.com



IEC 60309 - CEE 17 - IP67 Watertight Plugs

E-mail: sales@internationalconfig.com

888-Part Numbers

999-Part Numbers

Web site: www.internationalconfig.com

UL, CSA, European & International
Universal Approvals

European & International
Approvals



Plug and Inlet Closure Caps. Fits 999- & 888- Devices.
 16A / 20 Amp 2P+E Dust Cap P/N 999-613, P/N 999-613-WP
 16A / 20 Amp 3P+E Dust Cap P/N 999-614, P/N 999-614-WP
 16A / 20 Amp 3P+N+E Dust Cap P/N 999-615, P/N 999-615-WP
 32A / 30 Amp 2P+E, 3P+E Dust Cap P/N 999-623, P/N 999-623-WP
 32A / 30 Amp 3P+N+E Dust Cap P/N 999-625, P/N 999-625-WP
 63A / 60 Amp Dust Cap P/N 999-635
 125A / 100 Amp Dust Cap P/N 999-645
 63A / 60 Amp IP67 Watertight Cap P/N 999-635-WP
 125A / 100 Amp IP67 Watertight Cap P/N 999-645-WP

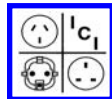
50/60 Hertz Hz

IEC EN 60309-1
IEC EN 60309-2
UL 1682
C22.2 No. 182.1

BS 4343
SABS 1239
VDE 0623
DIN 49462/63

Visit our web site to obtain dimensional product prints and specification data for part numbers listed below. Use the "Search by Part Number" field located on our homepage. Contact us for data sheets and specifications if the item you searched for is not displayed.

VOLTAGE	AMPS	POLES	GROUND POSITION	DEVICE COLOR	PART NUMBER	DESCRIPTION
110-130 V	16 A	2 P + E	4H	Yellow	999-2156-NS	Plug, IP67, European Approved
110-130 V	32 A	2 P + E	4H	Yellow	999-2168-NS	Plug, IP67, European Approved
120 V	20 A	2 P + E	4H	Yellow	888-2156-NS	Plug, IP67, UL & CSA Listed
120 V	30 A	2 P + E	4H	Yellow	888-2168-NS	Plug, IP67, UL & CSA Listed
220/250 V	16A / 20A	2 P + E	6H	Blue	888-2126-NS-WT	Plug, IP67, UL, CSA & European Listed
220/250 V	16 A	3 P + E	9H	Blue	999-2160-NS	Plug, IP67, European Approved
120/208-144/250 V	16 A	3 P + N + E	9H	Blue	999-2166-NS	Plug, IP67, European Approved
220/250 V	32A / 30A	2 P + E	6H	Blue	888-2169-NS	Plug, IP67, UL, CSA & European Listed
220/250 V	32 A	3 P + E	9H	Blue	999-2172-NS	Plug, IP67, European Approved
120/208-144/250 V	32 A	3 P + N + E	9H	Blue	999-2178-NS	Plug, IP67, European Approved
220/250 V	63A / 60A	2 P + E	6H	Blue	888-269306	Plug, IP67, UL, CSA & European Listed
220/250 V	63 A	3 P + E	9H	Blue	999-2184-NS	Plug, IP67, European Approved
120/208-144/250 V	63 A	3 P + N + E	9H	Blue	999-2188-NS	Plug, IP67, European Approved
220/250 V	125 A	2 P + E	6H	Blue	999-2191-NS	Plug, IP67, European Approved
220/250 V	125 A	3 P + E	9H	Blue	999-2194-NS	Plug, IP67, European Approved
120/208-144/250 V	125 A	3 P + N + E	9H	Blue	999-2198-NS	Plug, IP67, European Approved
380/415 V	16 A	2 P + E	9H	Red	999-2158-NS	Plug, IP67, European Approved
380/415 V	16 A	3 P + E	6H	Red	999-2161-NS	Plug, IP67, European Approved
220/380-240/415 V	16A / 20A	3 P + N + E	6H	Red	888-2167-NS	Plug, IP67, UL, CSA & European Listed
380/415 V	32 A	2 P + E	9H	Red	999-2170-NS	Plug, IP67, European Approved
380/415 V	32 A	3 P + E	6H	Red	999-2173-NS	Plug, IP67, European Approved
220/380-240/415 V	32A / 30A	3 P + N + E	6H	Red	888-2179-NS	Plug, IP67, UL, CSA & European Listed
380/415 V	63 A	2 P + E	9H	Red	999-0339-NS	Plug, IP67, European Approved
380/415 V	63 A	3 P + E	6H	Red	999-2185-NS	Plug, IP67, European Approved
220/380-240/415 V	63A / 60A	3 P + N + E	6H	Red	888-2189	Plug, IP67, UL, CSA & European Listed
380/415 V	125 A	2 P + E	9H	Red	999-0439-NS	Plug, IP67, European Approved
380/415 V	125 A	3 P + E	6H	Red	999-2195-NS	Plug, IP67, European Approved
220/380-240/415 V	125A / 100A	3 P + N + E	6H	Red	888-2199	Plug, IP67, UL, CSA & European Listed



© 2014 International Configurations, Inc. Entire contents of this catalog copyrighted. www.InternationalConfig.com

International Configurations, Inc. • P.O. Box 3374 • Enfield, Connecticut 06083 • TEL (860) 749-6380 • FAX (860) 749-2985 181

IEC 60309 - CEE 17 - IP44 Splashproof Connectors

E-mail: sales@internationalconfig.com

888-Part Numbers

999-Part Numbers

Web site: www.internationalconfig.com

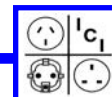
UL, CSA, European & International
Universal Approvals

European & International
Approvals



VOLTAGE	AMPS	POLES	GROUND POSITION	DEVICE COLOR	PART NUMBER	DESCRIPTION
50/60 Hertz Hz	IEC EN 60309-1 IEC EN 60309-2 UL 1682 C22.2 No. 182.1	BS 4343 SABS 1239 VDE 0623 DIN 49462/63	Visit our web site to obtain dimensional product prints and specification data for part numbers listed below. Use the "Search by Part Number" field located on our homepage. Contact us for data sheets and specifications if the item you searched for is not displayed.			
110-130 V	16 A	2 P + E	4H	Yellow	999-31000-NS	Connector, IP44, European Approved
110-130 V	32 A	2 P + E	4H	Yellow	999-31012-NS	Connector, IP44, European Approved
120 V	20 A	2 P + E	4H	Yellow	888-31000-NS	Connector, IP44, UL & CSA Listed
120 V	30 A	2 P + E	4H	Yellow	888-31012-NS	Connector, IP44, UL & CSA Listed
220/250 V	16A / 20A	2 P + E	6H	Blue	888-3126-NS	Connector, IP44, UL, CSA & European Listed
220/250 V	16 A	3 P + E	9H	Blue	999-31004-NS	Connector, IP44, European Approved
120/208-144/250 V	16 A	3 P + N + E	9H	Blue	999-31010-NS	Connector, IP44, European Approved
220/250 V	32A / 30A	2 P + E	6H	Blue	888-3138-NS	Connector, IP44, UL, CSA & European Listed
220/250 V	32 A	3 P + E	9H	Blue	999-31016-NS	Connector, IP44, European Approved
120/208-144/250 V	32 A	3 P + N + E	9H	Blue	999-31022-NS	Connector, IP44, European Approved
220/250 V	63A / 60A	2 P + E	6H	Blue	888-360306	Connector, IP44, UL, CSA & European Listed
220/250 V	63 A	3 P + E	9H	Blue		
120/208-144/250 V	63 A	3 P + N + E	9H	Blue		
220/250 V	125 A	2 P + E	6H	Blue		
220/250 V	125 A	3 P + E	9H	Blue		
120/208-144/250 V	125 A	3 P + N + E	9H	Blue		
380/415 V	16 A	2 P + E	9H	Red	999-31002-NS	Connector, IP44, European Approved
380/415 V	16 A	3 P + E	6H	Red	888-31005-NS	Connector, IP44, UL, CSA & European Listed
220/380-240/415 V	16A / 20A	3 P + N + E	6H	Red	888-303-NS	Connector, IP44, UL, CSA & European Listed
380/415 V	32 A	2 P + E	9H	Red	999-31014-NS	Connector, IP44, European Approved
380/415 V	32 A	3 P + E	6H	Red	999-31017-NS	Connector, IP44, European Approved
220/380-240/415 V	32A / 30A	3 P + N + E	6H	Red	888-331-NS	Connector, IP44, UL, CSA & European Listed
380/415 V	63 A	2 P + E	9H	Red		
380/415 V	63 A	3 P + E	6H	Red		
220/380-240/415 V	63A / 60A	3 P + N + E	6H	Red	888-360	Connector, IP44, UL, CSA & European Listed
380/415 V	125 A	2 P + E	9H	Red		
380/415 V	125 A	3 P + E	6H	Red		
220/380-240/415 V	125A / 100A	3 P + N + E	6H	Red		

© 2014 International Configurations, Inc. Entire contents of this catalog copyrighted. www.InternationalConfig.com



IEC 60309 - CEE 17 - IP67 Watertight Connectors

E-mail: sales@internationalconfig.com

888-Part Numbers

999-Part Numbers

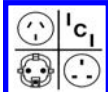
Web site: www.internationalconfig.com

UL, CSA, European & International
Universal Approvals

European & International
Approvals



50/60 Hertz Hz	IEC EN 60309-1 IEC EN 60309-2 UL 1682 C22.2 No. 182.1	BS 4343 SABS 1239 VDE 0623 DIN 49462/63	Visit our web site to obtain dimensional product prints and specification data for part numbers listed below. Use the "Search by Part Number" field located on our homepage. Contact us for data sheets and specifications if the item you searched for is not displayed.			
VOLTAGE	AMPS	POLES	GROUND POSITION	DEVICE COLOR	PART NUMBER	DESCRIPTION
110-130 V	16 A	2 P + E	4H	Yellow	999-3156-NS	Connector, IP67, European Approved
110-130 V	32 A	2 P + E	4H	Yellow	999-3168-NS	Connector, IP67, European Approved
120 V	20 A	2 P + E	4H	Yellow	888-3156-NS	Connector, IP67, UL & CSA Listed
120 V	30 A	2 P + E	4H	Yellow	888-3168-NS	Connector, IP67, UL & CSA Listed
220/250 V	16A / 20A	2 P + E	6H	Blue	888-3157-NS	Connector, IP67, UL, CSA & European Listed
220/250 V	16 A	3 P + E	9H	Blue	999-3160-NS	Connector, IP67, European Approved
120/208-144/250 V	16 A	3 P + N + E	9H	Blue	999-3166-NS	Connector, IP67, European Approved
220/250 V	32A / 30A	2 P + E	6H	Blue	888-3169-NS	Connector, IP67, UL, CSA & European Listed
220/250 V	32 A	3 P + E	9H	Blue	999-3172-NS	Connector, IP67, European Approved
120/208-144/250 V	32 A	3 P + N + E	9H	Blue	999-3178-NS	Connector, IP67, European Approved
220/250 V	63A / 60A	2 P + E	6H	Blue	888-369306	Connector, IP67, UL, CSA & European Listed
220/250 V	63 A	3 P + E	9H	Blue	999-3184-NS	Connector, IP67, European Approved
120/208-144/250 V	63 A	3 P + N + E	9H	Blue	999-3188-NS	Connector, IP67, European Approved
220/250 V	125 A	2 P + E	6H	Blue	999-3191-NS	Connector, IP67, European Approved
220/250 V	125 A	3 P + E	9H	Blue	999-3194-NS	Connector, IP67, European Approved
120/208-144/250 V	125 A	3 P + N + E	9H	Blue	999-3198-NS	Connector, IP67, European Approved
380/415 V	16 A	2 P + E	9H	Red	999-3158-NS	Connector, IP67, European Approved
380/415 V	16 A	3 P + E	6H	Red	999-3161-NS	Connector, IP67, European Approved
220/380-240/415 V	16A / 20A	3 P + N + E	6H	Red	888-3167-NS	Connector, IP67, UL, CSA & European Listed
380/415 V	32 A	2 P + E	9H	Red	999-3170-NS	Connector, IP67, European Approved
380/415 V	32 A	3 P + E	6H	Red	999-3173-NS	Connector, IP67, European Approved
220/380-240/415 V	32A / 30A	3 P + N + E	6H	Red	888-3179-NS	Connector, IP67, UL, CSA & European Listed
380/415 V	63 A	2 P + E	9H	Red	999-2339-NS	Connector, IP67, European Approved
380/415 V	63 A	3 P + E	6H	Red	999-3185-NS	Connector, IP67, European Approved
220/380-240/415 V	63A / 60A	3 P + N + E	6H	Red	888-3124	Connector, IP67, UL, CSA & European Listed
380/415 V	125 A	2 P + E	9H	Red	999-2439-NS	Connector, IP67, European Approved
380/415 V	125 A	3 P + E	6H	Red	999-3195-NS	Connector, IP67, European Approved
220/380-240/415 V	125A / 100A	3 P + N + E	6H	Red	888-3199	Connector, IP67, UL, CSA & European Listed



© 2014 International Configurations, Inc. Entire contents of this catalog copyrighted. www.InternationalConfig.com

International Configurations, Inc. • P.O. Box 3374 • Enfield, Connecticut 06083 • TEL (860) 749-6380 • FAX (860) 749-2985 183

IEC 60309 - CEE 17 - IP44 Splashproof Receptacles

E-mail: sales@internationalconfig.com

888-Part Numbers

999-Part Numbers

Web site: www.internationalconfig.com

UL, CSA, European & International
Universal Approvals

European & International
Approvals

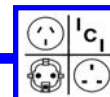


Panel Mount, Angle Type



50/60 Hertz Hz		IEC EN 60309-1 IEC EN 60309-2 UL 1682 C22.2 No. 182.1	BS 4343 SABS 1239 VDE 0623 DIN 49462/63	Visit our web site to obtain dimensional product prints and specification data for part numbers listed below. Use the "Search by Part Number" field located on our homepage. Contact us for data sheets and specifications if the item you searched for is not displayed.		
VOLTAGE	AMPS	POLES	GROUND POSITION	DEVICE COLOR	PART NUMBER	DESCRIPTION
110-130 V	16 A	2 P + E	4H	Yellow	999-1216-NS	Receptacle, IP44, European Approved
110-130 V	32 A	2 P + E	4H	Yellow	999-1228-NS	Receptacle, IP44, European Approved
120 V	20 A	2 P + E	4H	Yellow	888-1216-NS	Receptacle, IP44, UL & CSA Listed
120 V	30 A	2 P + E	4H	Yellow	888-1228-NS	Receptacle, IP44, UL & CSA Listed
220/250 V	16A / 20A	2 P + E	6H	Blue	888-1217-NS	Receptacle, IP44, UL, CSA & European Listed
220/250 V	16 A	3 P + E	9H	Blue	999-1220-NS	Receptacle, IP44, European Approved
120/208-144/250 V	16 A	3 P + N + E	9H	Blue	999-1226-NS	Receptacle, IP44, European Approved
220/250 V	32A / 30A	2 P + E	6H	Blue	888-1229-NS	Receptacle, IP44, UL, CSA & European Listed
220/250 V	32 A	3 P + E	9H	Blue	999-1232-NS	Receptacle, IP44, European Approved
120/208-144/250 V	32 A	3 P + N + E	9H	Blue	999-1238-NS	Receptacle, IP44, European Approved
220/250 V	63A / 60A	2 P + E	6H	Blue	888-560306	Receptacle, IP44, UL, CSA & European Listed
220/250 V	63 A	3 P + E	9H	Blue	999-1207-NS	Receptacle, IP44, European Approved
120/208-144/250 V	63 A	3 P + N + E	9H	Blue	999-1208-NS	Receptacle, IP44, European Approved
220/250 V	125 A	2 P + E	6H	Blue		
220/250 V	125 A	3 P + E	9H	Blue		
120/208-144/250 V	125 A	3 P + N + E	9H	Blue		
380/415 V	16 A	2 P + E	9H	Red	999-1218-NS	Receptacle, IP44, European Approved
380/415 V	16 A	3 P + E	6H	Red	999-1221-NS	Receptacle, IP44, European Approved
220/380-240/415 V	16A / 20A	3 P + N + E	6H	Red	888-1227-NS	Receptacle, IP44, UL, CSA & European Listed
380/415 V	32 A	2 P + E	9H	Red	999-1230-NS	Receptacle, IP44, European Approved
380/415 V	32 A	3 P + E	6H	Red	999-1233-NS	Receptacle, IP44, European Approved
220/380-240/415 V	32A / 30A	3 P + N + E	6H	Red	888-1239-NS	Receptacle, IP44, UL, CSA & European Listed
380/415 V	63 A	2 P + E	9H	Red		
380/415 V	63 A	3 P + E	6H	Red	999-1201-NS	Receptacle, IP44, European Approved
220/380-240/415 V	63A / 60A	3 P + N + E	6H	Red	888-560	Receptacle, IP44, UL, CSA & European Listed
380/415 V	125 A	2 P + E	9H	Red		
380/415 V	125 A	3 P + E	6H	Red		
220/380-240/415 V	125A / 100A	3 P + N + E	6H	Red		

© 2014 International Configurations, Inc. Entire contents of this catalog copyrighted. www.InternationalConfig.com



IEC 60309 - CEE 17 - IP44 Splashproof Receptacles

E-mail: sales@internationalconfig.com

888-Part Numbers

999-Part Numbers

Web site: www.internationalconfig.com

UL, CSA, European & International
Universal Approvals

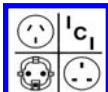
European & International
Approvals



Panel Mount, Straight Type



50/60 Hertz Hz		IEC EN 60309-1 IEC EN 60309-2 UL 1682 C22.2 No. 182.1	BS 4343 SABS 1239 VDE 0623 DIN 49462/63	Visit our web site to obtain dimensional product prints and specification data for part numbers listed below. Use the "Search by Part Number" field located on our homepage. Contact us for data sheets and specifications if the item you searched for is not displayed.		
VOLTAGE	AMPS	POLES	GROUND POSITION	DEVICE COLOR	PART NUMBER	DESCRIPTION
110-130 V	16 A	2 P + E	4H	Yellow	999-13000-NS	Receptacle, IP44, European Approved
110-130 V	32 A	2 P + E	4H	Yellow	999-13006-NS	Receptacle, IP44, European Approved
120 V	20 A	2 P + E	4H	Yellow	888-13000-NS	Receptacle, IP44, UL & CSA Listed
120 V	30 A	2 P + E	4H	Yellow	888-13006-NS	Receptacle, IP44, UL & CSA Listed
220/250 V	16A / 20A	2 P + E	6H	Blue	888-13001-NS	Receptacle, IP44, UL, CSA & European Listed
220/250 V	16 A	3 P + E	9H	Blue	999-1323-NS	Receptacle, IP44, European Approved
120/208-144/250 V	16 A	3 P + N + E	9H	Blue	999-13004-NS	Receptacle, IP44, European Approved
220/250 V	32A / 30A	2 P + E	6H	Blue	888-13007-NS	Receptacle, IP44, UL, CSA & European Listed
220/250 V	32 A	3 P + E	9H	Blue	999-13010-NS	Receptacle, IP44, European Approved
120/208-144/250 V	32 A	3 P + N + E	9H	Blue	999-1332-NS	Receptacle, IP44, European Approved
220/250 V	63A / 60A	2 P + E	6H	Blue	888-460306	Receptacle, IP44, UL, CSA & European Listed
220/250 V	63 A	3 P + E	9H	Blue		
120/208-144/250 V	63 A	3 P + N + E	9H	Blue	999-1305-NS	Receptacle, IP44, European Approved
220/250 V	125 A	2 P + E	6H	Blue		
220/250 V	125 A	3 P + E	9H	Blue		
120/208-144/250 V	125 A	3 P + N + E	9H	Blue		
380/415 V	16 A	2 P + E	9H	Red	999-13002-NS	Receptacle, IP44, European Approved
380/415 V	16 A	3 P + E	6H	Red	999-1324-NS	Receptacle, IP44, European Approved
220/380-240/415 V	16A / 20A	3 P + N + E	6H	Red	888-13005-NS	Receptacle, IP44, UL, CSA & European Listed
380/415 V	32 A	2 P + E	9H	Red	999-13008-NS	Receptacle, IP44, European Approved
380/415 V	32 A	3 P + E	6H	Red	999-13011-NS	Receptacle, IP44, European Approved
220/380-240/415 V	32A / 30A	3 P + N + E	6H	Red	888-1333-NS	Receptacle, IP44, UL, CSA & European Listed
380/415 V	63 A	2 P + E	9H	Red		
380/415 V	63 A	3 P + E	6H	Red		
220/380-240/415 V	63A / 60A	3 P + N + E	6H	Red	888-460	Receptacle, IP44, UL, CSA & European Listed
380/415 V	125 A	2 P + E	9H	Red		
380/415 V	125 A	3 P + E	6H	Red		
220/380-240/415 V	125A / 100A	3 P + N + E	6H	Red		



© 2014 International Configurations, Inc. Entire contents of this catalog copyrighted. www.InternationalConfig.com

International Configurations, Inc. • P.O. Box 3374 • Enfield, Connecticut 06083 • TEL (860) 749-6380 • FAX (860) 749-2985 185

IEC 60309 - CEE 17 - IP67 Watertight Receptacles

E-mail: sales@internationalconfig.com

888-Part Numbers

999-Part Numbers

Web site: www.internationalconfig.com

UL, CSA, European & International
Universal Approvals

European & International
Approvals

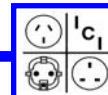


Panel Mount, Angle Type



50/60 Hertz Hz		IEC EN 60309-1 IEC EN 60309-2 UL 1682 C22.2 No. 182.1	BS 4343 SABS 1239 VDE 0623 DIN 49462/63	Visit our web site to obtain dimensional product prints and specification data for part numbers listed below. Use the "Search by Part Number" field located on our homepage. Contact us for data sheets and specifications if the item you searched for is not displayed.		
VOLTAGE	AMPS	POLES	GROUND POSITION	DEVICE COLOR	PART NUMBER	DESCRIPTION
110-130 V	16 A	2 P + E	4H	Yellow	999-1265-NS	Receptacle, IP67, European Approved
110-130 V	32 A	2 P + E	4H	Yellow	999-42324-NS	Receptacle, IP67, European Approved
120 V	20 A	2 P + E	4H	Yellow	888-1265-NS	Receptacle, IP67, UL & CSA Listed
120 V	30 A	2 P + E	4H	Yellow	888-42324-NS	Receptacle, IP67, UL & CSA Listed
220/250 V	16A / 20A	2 P + E	6H	Blue	888-1266-NS	Receptacle, IP67, UL, CSA & European Listed
220/250 V	16 A	3 P + E	9H	Blue	999-41429-NS	Receptacle, IP67, European Approved
120/208-144/250 V	16 A	3 P + N + E	9H	Blue	999-1275-NS	Receptacle, IP67, European Approved
220/250 V	32A / 30A	2 P + E	6H	Blue	888-42326-NS	Receptacle, IP67, UL, CSA & European Listed
220/250 V	32 A	3 P + E	9H	Blue	999-42429-NS	Receptacle, IP67, European Approved
120/208-144/250 V	32 A	3 P + N + E	9H	Blue	999-1287-NS	Receptacle, IP67, European Approved
220/250 V	63A / 60A	2 P + E	6H	Blue	888-569306	Receptacle, IP67, UL, CSA & European Listed
220/250 V	63 A	3 P + E	9H	Blue	999-1205-NS	Receptacle, IP67, European Approved
120/208-144/250 V	63 A	3 P + N + E	9H	Blue	999-1206-NS	Receptacle, IP67, European Approved
220/250 V	125 A	2 P + E	6H	Blue	999-12100-NS	Receptacle, IP67, European Approved
220/250 V	125 A	3 P + E	9H	Blue	999-12103-NS	Receptacle, IP67, European Approved
120/208-144/250 V	125 A	3 P + N + E	9H	Blue	999-12107-NS	Receptacle, IP67, European Approved
380/415 V	16 A	2 P + E	9H	Red	999-1267-NS	Receptacle, IP67, European Approved
380/415 V	16 A	3 P + E	6H	Red	999-41426-NS	Receptacle, IP67, European Approved
220/380-240/415 V	16A / 20A	3 P + N + E	6H	Red	888-1276-NS	Receptacle, IP67, UL, CSA & European Listed
380/415 V	32 A	2 P + E	9H	Red	999-42329-NS	Receptacle, IP67, European Approved
380/415 V	32 A	3 P + E	6H	Red	999-42426-NS	Receptacle, IP67, European Approved
220/380-240/415 V	32A / 30A	3 P + N + E	6H	Red	888-1288-NS	Receptacle, IP67, UL, CSA & European Listed
380/415 V	63 A	2 P + E	9H	Red	999-4339-NS	Receptacle, IP67, European Approved
380/415 V	63 A	3 P + E	6H	Red	999-1200-NS	Receptacle, IP67, European Approved
220/380-240/415 V	63A / 60A	3 P + N + E	6H	Red	888-129	Receptacle, IP67, UL, CSA & European Listed
380/415 V	125 A	2 P + E	9H	Red	999-4439-NS	Receptacle, IP67, European Approved
380/415 V	125 A	3 P + E	6H	Red	999-12104-NS	Receptacle, IP67, European Approved
220/380-240/415 V	125A / 100A	3 P + N + E	6H	Red	888-12108	Receptacle, IP67, UL, CSA & European Listed

© 2014 International Configurations, Inc. Entire contents of this catalog copyrighted. www.InternationalConfig.com



IEC 60309 - CEE 17 - IP67 Watertight Receptacles

E-mail: sales@internationalconfig.com

888-Part Numbers

999-Part Numbers

Web site: www.internationalconfig.com

UL, CSA, European & International
Universal Approvals

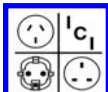
European & International
Approvals



Panel Mount, Straight Type



50/60 Hertz Hz	IEC EN 60309-1 IEC EN 60309-2 UL 1682 C22.2 No. 182.1	BS 4343 SABS 1239 VDE 0623 DIN 49462/63	Visit our web site to obtain dimensional product prints and specification data for part numbers listed below. Use the "Search by Part Number" field located on our homepage. Contact us for data sheets and specifications if the item you searched for is not displayed.			
VOLTAGE	AMPS	POLES	GROUND POSITION	DEVICE COLOR	PART NUMBER	DESCRIPTION
110-130 V	16 A	2 P + E	4H	Yellow	999-1371-NS	Receptacle, IP67, European Approved
110-130 V	32 A	2 P + E	4H	Yellow	999-13023-NS	Receptacle, IP67, European Approved
120 V	20 A	2 P + E	4H	Yellow	888-1371-NS	Receptacle, IP67, UL & CSA Listed
120 V	30 A	2 P + E	4H	Yellow	888-13023-NS	Receptacle, IP67, UL & CSA Listed
220/250 V	16A / 20A	2 P + E	6H	Blue	888-1372-NS	Receptacle, IP67, UL, CSA & European Listed
220/250 V	16 A	3 P + E	9H	Blue	999-31429-NS	Receptacle, IP67, European Approved
120/208-144/250 V	16 A	3 P + N + E	9H	Blue	999-1381-NS	Receptacle, IP67, European Approved
220/250 V	32A / 30A	2 P + E	6H	Blue	888-13024-NS	Receptacle, IP67, UL, CSA & European Listed
220/250 V	32 A	3 P + E	9H	Blue	999-32429-NS	Receptacle, IP67, European Approved
120/208-144/250 V	32 A	3 P + N + E	9H	Blue	999-1369-NS	Receptacle, IP67, European Approved
220/250 V	63A / 60A	2 P + E	6H	Blue	888-469306	Receptacle, IP67, UL, CSA & European Listed
220/250 V	63 A	3 P + E	9H	Blue	999-1399-NS	Receptacle, IP67, European Approved
120/208-144/250 V	63 A	3 P + N + E	9H	Blue	999-13103-NS	Receptacle, IP67, European Approved
220/250 V	125 A	2 P + E	6H	Blue	999-1402-NS	Receptacle, IP67, European Approved
220/250 V	125 A	3 P + E	9H	Blue	999-1404-NS	Receptacle, IP67, European Approved
120/208-144/250 V	125 A	3 P + N + E	9H	Blue	999-3459-NS	Receptacle, IP67, European Approved
380/415 V	16 A	2 P + E	9H	Red	999-1373-NS	Receptacle, IP67, European Approved
380/415 V	16 A	3 P + E	6H	Red	999-1376-NS	Receptacle, IP67, European Approved
220/380-240/415 V	16A / 20A	3 P + N + E	6H	Red	888-1382-NS	Receptacle, IP67, UL, CSA & European Listed
380/415 V	32 A	2 P + E	9H	Red	999-13025-NS	Receptacle, IP67, European Approved
380/415 V	32 A	3 P + E	6H	Red	999-13028-NS	Receptacle, IP67, European Approved
220/380-240/415 V	32A / 30A	3 P + N + E	6H	Red	888-1370-NS	Receptacle, IP67, UL, CSA & European Listed
380/415 V	63 A	2 P + E	9H	Red	999-3339-NS	Receptacle, IP67, European Approved
380/415 V	63 A	3 P + E	6H	Red	999-13100-NS	Receptacle, IP67, European Approved
220/380-240/415 V	63A / 60A	3 P + N + E	6H	Red	888-469	Receptacle, IP67, UL, CSA & European Listed
380/415 V	125 A	2 P + E	9H	Red	999-3439-NS	Receptacle, IP67, European Approved
380/415 V	125 A	3 P + E	6H	Red	999-1406-NS	Receptacle, IP67, European Approved
220/380-240/415 V	125A / 100A	3 P + N + E	6H	Red	888-479	Receptacle, IP67, UL, CSA & European Listed



© 2014 International Configurations, Inc. Entire contents of this catalog copyrighted. www.InternationalConfig.com

International Configurations, Inc. • P.O. Box 3374 • Enfield, Connecticut 06083 • TEL (860) 749-6380 • FAX (860) 749-2985 187

IEC 60309 - CEE 17 - IP44 Splashproof Receptacles

E-mail: sales@internationalconfig.com

888-Part Numbers

999-Part Numbers

Web site: www.internationalconfig.com

UL, CSA, European & International
Universal Approvals

European & International
Approvals

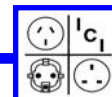


Wall Mount With Box



50/60 Hertz Hz		IEC EN 60309-1 IEC EN 60309-2 UL 1682 C22.2 No. 182.1	BS 4343 SABS 1239 VDE 0623 DIN 49462/63	Visit our web site to obtain dimensional product prints and specification data for part numbers listed below. Use the "Search by Part Number" field located on our homepage. Contact us for data sheets and specifications if the item you searched for is not displayed.		
VOLTAGE	AMPS	POLES	GROUND POSITION	DEVICE COLOR	PART NUMBER	DESCRIPTION
110-130 V	16 A	2 P + E	4H	Yellow	999-110-NS	Receptacle, IP44, European Approved
110-130 V	32 A	2 P + E	4H	Yellow	999-1113-NS	Receptacle, IP44, European Approved
120 V	20 A	2 P + E	4H	Yellow	888-110-NS	Receptacle, IP44, UL & CSA Listed
120 V	30 A	2 P + E	4H	Yellow	888-1113-NS	Receptacle, IP44, UL & CSA Listed
220/250 V	16A / 20A	2 P + E	6H	Blue	888-111-NS	Receptacle, IP44, UL, CSA & European Listed
220/250 V	16 A	3 P + E	9H	Blue	999-114-NS	Receptacle, IP44, European Approved
120/208-144/250 V	16 A	3 P + N + E	9H	Blue	999-1111-NS	Receptacle, IP44, European Approved
220/250 V	32A / 30A	2 P + E	6H	Blue	888-1114-NS	Receptacle, IP44, UL, CSA & European Listed
220/250 V	32 A	3 P + E	9H	Blue	999-1117-NS	Receptacle, IP44, European Approved
120/208-144/250 V	32 A	3 P + N + E	9H	Blue	999-1123-NS	Receptacle, IP44, European Approved
220/250 V	63A / 60A	2 P + E	6H	Blue		
220/250 V	63 A	3 P + E	9H	Blue	999-1126-NS	Receptacle, IP44, European Approved
120/208-144/250 V	63 A	3 P + N + E	9H	Blue	999-1130-NS	Receptacle, IP44, European Approved
220/250 V	125 A	2 P + E	6H	Blue		
220/250 V	125 A	3 P + E	9H	Blue		
120/208-144/250 V	125 A	3 P + N + E	9H	Blue		
380/415 V	16 A	2 P + E	9H	Red	999-112-NS	Receptacle, IP44, European Approved
380/415 V	16 A	3 P + E	6H	Red	999-115-NS	Receptacle, IP44, European Approved
220/380-240/415 V	16A / 20A	3 P + N + E	6H	Red	888-102-NS	Receptacle, IP44, UL, CSA & European Listed
380/415 V	32 A	2 P + E	9H	Red	999-1115-NS	Receptacle, IP44, European Approved
380/415 V	32 A	3 P + E	6H	Red	999-1118-NS	Receptacle, IP44, European Approved
220/380-240/415 V	32A / 30A	3 P + N + E	6H	Red	888-103-NS	Receptacle, IP44, UL, CSA & European Listed
380/415 V	63 A	2 P + E	9H	Red		
380/415 V	63 A	3 P + E	6H	Red	999-1127-NS	Receptacle, IP44, European Approved
220/380-240/415 V	63A / 60A	3 P + N + E	6H	Red	888-161	Receptacle, IP44, UL, CSA & European Listed
380/415 V	125 A	2 P + E	9H	Red		
380/415 V	125 A	3 P + E	6H	Red		
220/380-240/415 V	125A / 100A	3 P + N + E	6H	Red		

© 2014 International Configurations, Inc. Entire contents of this catalog copyrighted. www.InternationalConfig.com



IEC 60309 - CEE 17 - IP67 Watertight Receptacles

E-mail: sales@internationalconfig.com

888-Part Numbers

999-Part Numbers

Web site: www.internationalconfig.com

UL, CSA, European & International
Universal Approvals

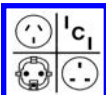
European & International
Approvals



Wall Mount With Box



50/60 Hertz Hz		IEC EN 60309-1 IEC EN 60309-2 UL 1682 C22.2 No. 182.1	BS 4343 SABS 1239 VDE 0623 DIN 49462/63	Visit our web site to obtain dimensional product prints and specification data for part numbers listed below. Use the "Search by Part Number" field located on our homepage. Contact us for data sheets and specifications if the item you searched for is not displayed.		
VOLTAGE	AMPS	POLES	GROUND POSITION	DEVICE COLOR	PART NUMBER	DESCRIPTION
110-130 V	16 A	2 P + E	4H	Yellow	999-1132-NS	Receptacle, IP67, European Approved
110-130 V	32 A	2 P + E	4H	Yellow	999-1144-NS	Receptacle, IP67, European Approved
120 V	20 A	2 P + E	4H	Yellow	888-1132-NS	Receptacle, IP67, UL & CSA Listed
120 V	30 A	2 P + E	4H	Yellow	888-1144-NS	Receptacle, IP67, UL & CSA Listed
220/250 V	16A / 20A	2 P + E	6H	Blue	888-1133-NS	Receptacle, IP67, UL, CSA & European Listed
220/250 V	16 A	3 P + E	9H	Blue	999-1136-NS	Receptacle, IP67, European Approved
120/208-144/250 V	16 A	3 P + N + E	9H	Blue	999-1142-NS	Receptacle, IP67, European Approved
220/250 V	32A / 30A	2 P + E	6H	Blue	888-3227-NS	Receptacle, IP67, UL, CSA & European Listed
220/250 V	32 A	3 P + E	9H	Blue	999-1148-NS	Receptacle, IP67, European Approved
120/208-144/250 V	32 A	3 P + N + E	9H	Blue	999-1154-NS	Receptacle, IP67, European Approved
220/250 V	63A / 60A	2 P + E	6H	Blue	999-1157-NS	Receptacle, IP67, European Approved
220/250 V	63 A	3 P + E	9H	Blue	999-1160-NS	Receptacle, IP67, European Approved
120/208-144/250 V	63 A	3 P + N + E	9H	Blue	999-1164-NS	Receptacle, IP67, European Approved
220/250 V	125 A	2 P + E	6H	Blue	999-1167-NS	Receptacle, IP67, European Approved
220/250 V	125 A	3 P + E	9H	Blue	999-1170-NS	Receptacle, IP67, European Approved
120/208-144/250 V	125 A	3 P + N + E	9H	Blue		
380/415 V	16 A	2 P + E	9H	Red	999-1134-NS	Receptacle, IP67, European Approved
380/415 V	16 A	3 P + E	6H	Red	999-1137-NS	Receptacle, IP67, European Approved
220/380-240/415 V	16A / 20A	3 P + N + E	6H	Red	888-1043-NS	Receptacle, IP67, UL, CSA & European Listed
380/415 V	32 A	2 P + E	9H	Red		
380/415 V	32 A	3 P + E	6H	Red	999-1149-NS	Receptacle, IP67, European Approved
220/380-240/415 V	32A / 30A	3 P + N + E	6H	Red	888-1155-NS	Receptacle, IP67, UL, CSA & European Listed
380/415 V	63 A	2 P + E	9H	Red		
380/415 V	63 A	3 P + E	6H	Red	999-1161-NS	Receptacle, IP67, European Approved
220/380-240/415 V	63A / 60A	3 P + N + E	6H	Red	888-169	Receptacle, IP67, UL, CSA & European Listed
380/415 V	125 A	2 P + E	9H	Red		
380/415 V	125 A	3 P + E	6H	Red	999-1171-NS	Receptacle, IP67, European Approved
220/380-240/415 V	125A / 100A	3 P + N + E	6H	Red	888-179	Receptacle, IP67, UL, CSA & European Listed



© 2014 International Configurations, Inc. Entire contents of this catalog copyrighted. www.InternationalConfig.com

International Configurations, Inc. • P.O. Box 3374 • Enfield, Connecticut 06083 • TEL (860) 749-6380 • FAX (860) 749-2985 189

IEC 60309 - CEE 17 - IP44 Splashproof Inlets

888-Part Numbers

UL, CSA, European & International
Universal Approvals

999-Part Numbers

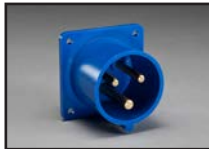
European & International
Approvals

E-mail: sales@internationalconfig.com

Web site: www.internationalconfig.com



Panel Mount, Straight Type



Plug and Inlet Closure Caps. Fits 999- & 888- Devices.
 16A / 20 Amp 2P+E Dust Cap P/N 999-613, P/N 999-613-WP
 16A / 20 Amp 3P+E Dust Cap P/N 999-614, P/N 999-614-WP
 16A / 20 Amp 3P+N+E Dust Cap P/N 999-615, P/N 999-615-WP
 32A / 30 Amp 2P+E, 3P+E Dust Cap P/N 999-623, P/N 999-623-WP
 32A / 30 Amp 3P+N+E Dust Cap P/N 999-625, P/N 999-625-WP
 63A / 60 Amp Dust Cap P/N 999-635
 125A / 100 Amp Dust Cap P/N 999-645
 63A / 60 Amp IP67 Watertight Cap P/N 999-635-WP
 125A / 100 Amp IP67 Watertight Cap P/N 999-645-WP

50/60 Hertz Hz

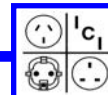
IEC EN 60309-1
IEC EN 60309-2
UL 1682
C22.2 No. 182.1

BS 4343
SABS 1239
VDE 0623
DIN 49462/63

Visit our web site to obtain dimensional product prints and specification data for part numbers listed below. Use the "Search by Part Number" field located on our homepage. Contact us for data sheets and specifications if the item you searched for is not displayed.

VOLTAGE	AMPS	POLES	GROUND POSITION	DEVICE COLOR	PART NUMBER	DESCRIPTION
110-130 V	16 A	2 P + E	4H	Yellow	999-6134-NS	Inlet, IP44, European Approved
110-130 V	32 A	2 P + E	4H	Yellow	999-6234-NS	Inlet, IP44, European Approved
120 V	20 A	2 P + E	4H	Yellow	888-6134-NS	Inlet, IP44, UL & CSA Listed
120 V	30 A	2 P + E	4H	Yellow	888-6234-NS	Inlet, IP44, UL & CSA Listed
220/250 V	16A / 20A	2 P + E	6H	Blue	888-6136-NS	Inlet, IP44, UL, CSA & European Listed
220/250 V	16 A	3 P + E	9H	Blue	999-6149-NS	Inlet, IP44, European Approved
120/208-144/250 V	16 A	3 P + N + E	9H	Blue	999-6159-NS	Inlet, IP44, European Approved
220/250 V	32A / 30A	2 P + E	6H	Blue	888-6236-NS	Inlet, IP44, UL, CSA & European Listed
220/250 V	32 A	3 P + E	9H	Blue	999-6249-NS	Inlet, IP44, European Approved
120/208-144/250 V	32 A	3 P + N + E	9H	Blue	999-6259-NS	Inlet, IP44, European Approved
220/250 V	63A / 60A	2 P + E	6H	Blue		
220/250 V	63 A	3 P + E	9H	Blue		
120/208-144/250 V	63 A	3 P + N + E	9H	Blue		
220/250 V	125 A	2 P + E	6H	Blue		
220/250 V	125 A	3 P + E	9H	Blue		
120/208-144/250 V	125 A	3 P + N + E	9H	Blue		
380/415 V	16 A	2 P + E	9H	Red	999-6139-NS	Inlet, IP44, European Approved
380/415 V	16 A	3 P + E	6H	Red	999-6146-NS	Inlet, IP44, European Approved
220/380-240/415 V	16A / 20A	3 P + N + E	6H	Red	888-7156-NS	Inlet, IP44, UL, CSA & European Listed
380/415 V	32 A	2 P + E	9H	Red		
380/415 V	32 A	3 P + E	6H	Red	999-6246-NS	Inlet, IP44, European Approved
220/380-240/415 V	32A / 30A	3 P + N + E	6H	Red	888-6256-NS	Inlet, IP44, UL, CSA & European Listed
380/415 V	63 A	2 P + E	9H	Red		
380/415 V	63 A	3 P + E	6H	Red		
220/380-240/415 V	63A / 60A	3 P + N + E	6H	Red		
380/415 V	125 A	2 P + E	9H	Red		
380/415 V	125 A	3 P + E	6H	Red		
220/380-240/415 V	125A / 100A	3 P + N + E	6H	Red		

© 2014 International Configurations, Inc. Entire contents of this catalog copyrighted. www.InternationalConfig.com



IEC 60309 - CEE 17 - IP67 Watertight Inlets

888-Part Numbers

999-Part Numbers

UL, CSA, European & International
Universal Approvals

European & International
Approvals

E-mail: sales@internationalconfig.com

Web site: www.internationalconfig.com



Panel Mount, Straight Type



Plug and Inlet Closure Caps. Fits 999- & 888- Devices.
 16A / 20 Amp 2P+E Dust Cap P/N 999-613, P/N 999-613-WP
 16A / 20 Amp 3P+E Dust Cap P/N 999-614, P/N 999-614-WP
 16A / 20 Amp 3P+N+E Dust Cap P/N 999-615, P/N 999-615-WP
 32A / 30 Amp 2P+E, 3P+E Dust Cap P/N 999-623, P/N 999-623-WP
 32A / 30 Amp 3P+N+E Dust Cap P/N 999-625, P/N 999-625-WP
 63A / 60 Amp Dust Cap P/N 999-635
 125A / 100 Amp Dust Cap P/N 999-645
 63A / 60 Amp IP67 Watertight Cap P/N 999-635-WP
 125A / 100 Amp IP67 Watertight Cap P/N 999-645-WP

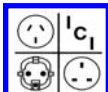
50/60 Hertz Hz

IEC EN 60309-1
IEC EN 60309-2
UL 1682
C22.2 No. 182.1

BS 4343
SABS 1239
VDE 0623
DIN 49462/63

Visit our web site to obtain dimensional product prints and specification data for part numbers listed below. Use the "Search by Part Number" field located on our homepage. Contact us for data sheets and specifications if the item you searched for is not displayed.

VOLTAGE	AMPS	POLES	GROUND POSITION	DEVICE COLOR	PART NUMBER	DESCRIPTION
110-130 V	16 A	2 P + E	4H	Yellow		
110-130 V	32 A	2 P + E	4H	Yellow		
120 V	20 A	2 P + E	4H	Yellow		
120 V	30 A	2 P + E	4H	Yellow		
220/250 V	16A / 20A	2 P + E	6H	Blue		
220/250 V	16 A	3 P + E	9H	Blue		
120/208-144/250 V	16 A	3 P + N + E	9H	Blue		
220/250 V	32A / 30A	2 P + E	6H	Blue		
220/250 V	32 A	3 P + E	9H	Blue		
120/208-144/250 V	32 A	3 P + N + E	9H	Blue		
220/250 V	63A / 60A	2 P + E	6H	Blue	999-6336-NS	Inlet, IP67, European Approved
220/250 V	63 A	3 P + E	9H	Blue	999-6349-NS	Inlet, IP67, European Approved
120/208-144/250 V	63 A	3 P + N + E	9H	Blue	999-6359-NS	Inlet, IP67, European Approved
220/250 V	125 A	2 P + E	6H	Blue	999-6436-NS	Inlet, IP67, European Approved
220/250 V	125 A	3 P + E	9H	Blue	999-6449-NS	Inlet, IP67, European Approved
120/208-144/250 V	125 A	3 P + N + E	9H	Blue	999-6459-NS	Inlet, IP67, European Approved
380/415 V	16 A	2 P + E	9H	Red		
380/415 V	16 A	3 P + E	6H	Red		
220/380-240/415 V	16A / 20A	3 P + N + E	6H	Red		
380/415 V	32 A	2 P + E	9H	Red		
380/415 V	32 A	3 P + E	6H	Red		
220/380-240/415 V	32A / 30A	3 P + N + E	6H	Red		
380/415 V	63 A	2 P + E	9H	Red	999-6339-NS	Inlet, IP67, European Approved
380/415 V	63 A	3 P + E	6H	Red	999-6346-NS	Inlet, IP67, European Approved
220/380-240/415 V	63A / 60A	3 P + N + E	6H	Red	888-665	Inlet, IP67, UL, CSA & European Listed
380/415 V	125 A	2 P + E	9H	Red	999-6439-NS	Inlet, IP67, European Approved
380/415 V	125 A	3 P + E	6H	Red	999-6446-NS	Inlet, IP67, European Approved
220/380-240/415 V	125A / 100A	3 P + N + E	6H	Red	888-679	Inlet, IP67, UL, CSA & European Listed



© 2014 International Configurations, Inc. Entire contents of this catalog copyrighted. www.InternationalConfig.com

International Configurations, Inc. • P.O. Box 3374 • Enfield, Connecticut 06083 • TEL (860) 749-6380 • FAX (860) 749-2985 191

IEC 60309 - CEE 17 - IP44 Splashproof Inlets

888-Part Numbers

UL, CSA, European & International
Universal Approvals

999-Part Numbers

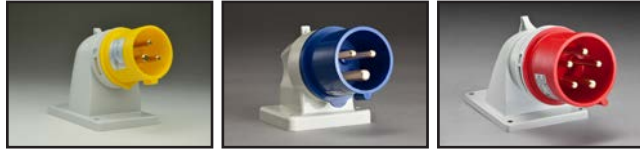
European & International
Approvals

E-mail: sales@internationalconfig.com

Web site: www.internationalconfig.com



Panel Mount, Angle Type



Plug and Inlet Closure Caps. Fits 999- & 888- Devices.
 16A / 20 Amp 2P+E Dust Cap P/N 999-613, P/N 999-613-WP
 16A / 20 Amp 3P+E Dust Cap P/N 999-614, P/N 999-614-WP
 16A / 20 Amp 3P+N+E Dust Cap P/N 999-615, P/N 999-615-WP
 32A / 30 Amp 2P+E, 3P+E Dust Cap P/N 999-623, P/N 999-623-WP
 32A / 30 Amp 3P+N+E Dust Cap P/N 999-625, P/N 999-625-WP
 63A / 60 Amp Dust Cap P/N 999-635
 125A / 100 Amp Dust Cap P/N 999-645
 63A / 60 Amp IP67 Watertight Cap P/N 999-635-WP
 125A / 100 Amp IP67 Watertight Cap P/N 999-645-WP

50/60 Hertz Hz

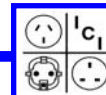
IEC EN 60309-1
IEC EN 60309-2
UL 1682
C22.2 No. 182.1

BS 4343
SABS 1239
VDE 0623
DIN 49462/63

Visit our web site to obtain dimensional product prints and specification data for part numbers listed below. Use the "Search by Part Number" field located on our homepage. Contact us for data sheets and specifications if the item you searched for is not displayed.

VOLTAGE	AMPS	POLES	GROUND POSITION	DEVICE COLOR	PART NUMBER	DESCRIPTION
110-130 V	16 A	2 P + E	4H	Yellow	999-2705-NS	Inlet, IP44, European Approved
110-130 V	32 A	2 P + E	4H	Yellow	999-2758-NS	Inlet, IP44, European Approved
120 V	20 A	2 P + E	4H	Yellow	888-611316	Inlet, IP44, UL & CSA Listed
120 V	30 A	2 P + E	4H	Yellow	888-631316	Inlet, IP44, UL & CSA Listed
220/250 V	16A / 20A	2 P + E	6H	Blue	888-611306	Inlet, IP44, UL, CSA & European Listed
220/250 V	16 A	3 P + E	9H	Blue	999-2709-NS	Inlet, IP44, European Approved
120/208-144/250 V	16 A	3 P + N + E	9H	Blue	999-2756-NS	Inlet, IP44, European Approved
220/250 V	32A / 30A	2 P + E	6H	Blue	888-631306	Inlet, IP44, UL, CSA & European Listed
220/250 V	32 A	3 P + E	9H	Blue	999-2762-NS	Inlet, IP44, European Approved
120/208-144/250 V	32 A	3 P + N + E	9H	Blue	999-2768-NS	Inlet, IP44, European Approved
220/250 V	63A / 60A	2 P + E	6H	Blue	888-661306	Inlet, IP44, UL, CSA & European Listed
220/250 V	63 A	3 P + E	9H	Blue		
120/208-144/250 V	63 A	3 P + N + E	9H	Blue		
220/250 V	125 A	2 P + E	6H	Blue		
220/250 V	125 A	3 P + E	9H	Blue		
120/208-144/250 V	125 A	3 P + N + E	9H	Blue		
380/415 V	16 A	2 P + E	9H	Red	999-7139-NS	Inlet, IP44, European Approved
380/415 V	16 A	3 P + E	6H	Red	999-2751-NS	Inlet, IP44, European Approved
220/380-240/415 V	16A / 20A	3 P + N + E	6H	Red	888-2757-NS	Inlet, IP44, UL, CSA & European Listed
380/415 V	32 A	2 P + E	9H	Red	999-7239-NS	Inlet, IP44, European Approved
380/415 V	32 A	3 P + E	6H	Red	999-2763-NS	Inlet, IP44, European Approved
220/380-240/415 V	32A / 30A	3 P + N + E	6H	Red	888-2769-NS	Inlet, IP44, UL, CSA & European Listed
380/415 V	63 A	2 P + E	9H	Red		
380/415 V	63 A	3 P + E	6H	Red		
220/380-240/415 V	63A / 60A	3 P + N + E	6H	Red		
380/415 V	125 A	2 P + E	9H	Red		
380/415 V	125 A	3 P + E	6H	Red		
220/380-240/415 V	125A / 100A	3 P + N + E	6H	Red		

© 2014 International Configurations, Inc. Entire contents of this catalog copyrighted. www.InternationalConfig.com



IEC 60309 - CEE 17 - IP67 Watertight Inlets

E-mail: sales@internationalconfig.com

888-Part Numbers

999-Part Numbers

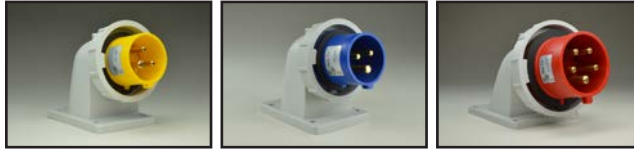
Web site: www.internationalconfig.com

UL, CSA, European & International
Universal Approvals

European & International
Approvals



Panel Mount, Angle Type

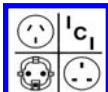


Plug and Inlet Closure Caps. Fits 999- & 888- Devices.

- 16A / 20 Amp 2P+E Dust Cap P/N 999-613, P/N 999-613-WP
- 16A / 20 Amp 3P+E Dust Cap P/N 999-614, P/N 999-614-WP
- 16A / 20 Amp 3P+N+E Dust Cap P/N 999-615, P/N 999-615-WP
- 32A / 30 Amp 2P+E, 3P+E Dust Cap P/N 999-623, P/N 999-623-WP
- 32A / 30 Amp 3P+N+E Dust Cap P/N 999-625, P/N 999-625-WP
- 63A / 60 Amp Dust Cap P/N 999-635
- 125A / 100 Amp Dust Cap P/N 999-645
- 63A / 60 Amp IP67 Watertight Cap P/N 999-635-WP
- 125A / 100 Amp IP67 Watertight Cap P/N 999-645-WP

Visit our web site to obtain dimensional product prints and specification data for part numbers listed below. Use the "Search by Part Number" field located on our homepage. Contact us for data sheets and specifications if the item you searched for is not displayed.

VOLTAGE	AMPS	POLES	GROUND POSITION	DEVICE COLOR	PART NUMBER	DESCRIPTION
110-130 V	16 A	2 P + E	4H	Yellow	999-71324-NS	Inlet, IP67, European Approved
110-130 V	32 A	2 P + E	4H	Yellow	999-72324-NS	Inlet, IP67, European Approved
120 V	20 A	2 P + E	4H	Yellow	888-71324-NS	Inlet, IP67, UL & CSA Listed
120 V	30 A	2 P + E	4H	Yellow	888-72324-NS	Inlet, IP67, UL & CSA Listed
220/250 V	16A / 20A	2 P + E	6H	Blue	888-71326-NS	Inlet, IP67, UL, CSA & European Listed
220/250 V	16 A	3 P + E	9H	Blue	999-71429-NS	Inlet, IP67, European Approved
120/208-144/250 V	16 A	3 P + N + E	9H	Blue	999-2792-NS	Inlet, IP67, European Approved
220/250 V	32A / 30A	2 P + E	6H	Blue	888-72326-NS	Inlet, IP67, UL, CSA & European Listed
220/250 V	32 A	3 P + E	9H	Blue	999-72429-NS	Inlet, IP67, European Approved
120/208-144/250 V	32 A	3 P + N + E	9H	Blue	999-27004-NS	Inlet, IP67, European Approved
220/250 V	63A / 60A	2 P + E	6H	Blue	888-669306	Inlet, IP67, UL, CSA & European Listed
220/250 V	63 A	3 P + E	9H	Blue	999-27010-NS	Inlet, IP67, European Approved
120/208-144/250 V	63 A	3 P + N + E	9H	Blue	999-27016-NS	Inlet, IP67, European Approved
220/250 V	125 A	2 P + E	6H	Blue	999-2736-NS	Inlet, IP67, European Approved
220/250 V	125 A	3 P + E	9H	Blue	999-2739-NS	Inlet, IP67, European Approved
120/208-144/250 V	125 A	3 P + N + E	9H	Blue	999-7459-NS	Inlet, IP67, European Approved
380/415 V	16 A	2 P + E	9H	Red	999-71329-NS	Inlet, IP67, European Approved
380/415 V	16 A	3 P + E	6H	Red	999-71426-NS	Inlet, IP67, European Approved
220/380-240/415 V	16A / 20A	3 P + N + E	6H	Red	888-2793-NS	Inlet, IP67, UL, CSA & European Listed
380/415 V	32 A	2 P + E	9H	Red	999-72329-NS	Inlet, IP67, European Approved
380/415 V	32 A	3 P + E	6H	Red	999-72426-NS	Inlet, IP67, European Approved
220/380-240/415 V	32A / 30A	3 P + N + E	6H	Red	888-27005-NS	Inlet, IP67, UL, CSA & European Listed
380/415 V	63 A	2 P + E	9H	Red	999-7339-NS	Inlet, IP67, European Approved
380/415 V	63 A	3 P + E	6H	Red	999-27011-NS	Inlet, IP67, European Approved
220/380-240/415 V	63A / 60A	3 P + N + E	6H	Red	888-27017	Inlet, IP67, UL, CSA & European Listed
380/415 V	125 A	2 P + E	9H	Red	999-7439-NS	Inlet, IP67, European Approved
380/415 V	125 A	3 P + E	6H	Red	999-2740-NS	Inlet, IP67, European Approved
220/380-240/415 V	125A / 100A	3 P + N + E	6H	Red	999-2744-NS	Inlet, IP67, European Approved



© 2014 International Configurations, Inc. Entire contents of this catalog copyrighted. www.InternationalConfig.com

International Configurations, Inc. • P.O. Box 3374 • Enfield, Connecticut 06083 • TEL (860) 749-6380 • FAX (860) 749-2985 193

IEC 60309 - CEE 17 - IP44 Splashproof Inlets

888-Part Numbers

UL, CSA, European & International
Universal Approvals

999-Part Numbers

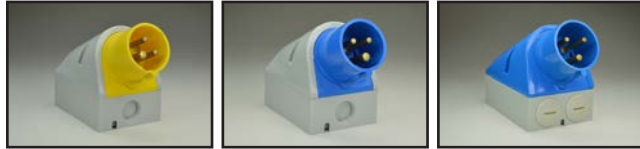
European & International
Approvals

E-mail: sales@internationalconfig.com

Web site: www.internationalconfig.com



Wall Mount With Box



Plug and Inlet Closure Caps. Fits 999- & 888- Devices.
 16A / 20 Amp 2P+E Dust Cap P/N 999-613, P/N 999-613-WP
 16A / 20 Amp 3P+E Dust Cap P/N 999-614, P/N 999-614-WP
 16A / 20 Amp 3P+N+E Dust Cap P/N 999-615, P/N 999-615-WP
 32A / 30 Amp 2P+E, 3P+E Dust Cap P/N 999-623, P/N 999-623-WP
 32A / 30 Amp 3P+N+E Dust Cap P/N 999-625, P/N 999-625-WP
 63A / 60 Amp Dust Cap P/N 999-635
 125A / 100 Amp Dust Cap P/N 999-645
 63A / 60 Amp IP67 Watertight Cap P/N 999-635-WP
 125A / 100 Amp IP67 Watertight Cap P/N 999-645-WP

50/60 Hertz Hz

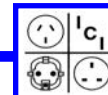
IEC EN 60309-1
IEC EN 60309-2
UL 1682
C22.2 No. 182.1

BS 4343
SABS 1239
VDE 0623
DIN 49462/63

Visit our web site to obtain dimensional product prints and specification data for part numbers listed below. Use the "Search by Part Number" field located on our homepage. Contact us for data sheets and specifications if the item you searched for is not displayed.

VOLTAGE	AMPS	POLES	GROUND POSITION	DEVICE COLOR	PART NUMBER	DESCRIPTION
110-130 V	16 A	2 P + E	4H	Yellow	999-244-NS	Inlet, IP44, European Approved
110-130 V	32 A	2 P + E	4H	Yellow	999-2416-NS	Inlet, IP44, European Approved
120 V	20 A	2 P + E	4H	Yellow	888-5335-NS	Inlet, IP44, UL, CSA & European Listed
120 V	30 A	2 P + E	4H	Yellow	888-5435-NS	Inlet, IP44, UL, CSA & European Listed
220/250 V	16A / 20A	2 P + E	6H	Blue	888-245-NS	Inlet, IP44, UL, CSA & European Listed
220/250 V	16 A	3 P + E	9H	Blue	999-248-NS	Inlet, IP44, European Approved
120/208-144/250 V	16 A	3 P + N + E	9H	Blue	999-2414-NS	Inlet, IP44, European Approved
220/250 V	32A / 30A	2 P + E	6H	Blue	888-2417-NS	Inlet, IP44, UL, CSA & European Listed
220/250 V	32 A	3 P + E	9H	Blue	999-2420-NS	Inlet, IP44, European Approved
120/208-144/250 V	32 A	3 P + N + E	9H	Blue	999-2426-NS	Inlet, IP44, European Approved
220/250 V	63A / 60A	2 P + E	6H	Blue		
220/250 V	63 A	3 P + E	9H	Blue		
120/208-144/250 V	63 A	3 P + N + E	9H	Blue		
220/250 V	125 A	2 P + E	6H	Blue		
220/250 V	125 A	3 P + E	9H	Blue		
120/208-144/250 V	125 A	3 P + N + E	9H	Blue		
380/415 V	16 A	2 P + E	9H	Red	999-246-NS	Inlet, IP44, European Approved
380/415 V	16 A	3 P + E	6H	Red	999-249-NS	Inlet, IP44, European Approved
220/380-240/415 V	16A / 20A	3 P + N + E	6H	Red	888-2415-NS	Inlet, IP44, UL, CSA & European Listed
380/415 V	32 A	2 P + E	9H	Red	999-2418-NS	Inlet, IP44, European Approved
380/415 V	32 A	3 P + E	6H	Red	999-2421-NS	Inlet, IP44, European Approved
220/380-240/415 V	32A / 30A	3 P + N + E	6H	Red	888-2427-NS	Inlet, IP44, UL, CSA & European Listed
380/415 V	63 A	2 P + E	9H	Red		
380/415 V	63 A	3 P + E	6H	Red		
220/380-240/415 V	63A / 60A	3 P + N + E	6H	Red		
380/415 V	125 A	2 P + E	9H	Red		
380/415 V	125 A	3 P + E	6H	Red		
220/380-240/415 V	125A / 100A	3 P + N + E	6H	Red		

© 2014 International Configurations, Inc. Entire contents of this catalog copyrighted. www.InternationalConfig.com



IEC 60309 - CEE 17 - IP67 Watertight Inlets

888-Part Numbers

999-Part Numbers

UL, CSA, European & International
Universal Approvals

European & International
Approvals

E-mail: sales@internationalconfig.com

Web site: www.internationalconfig.com



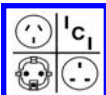
Wall Mount With Box



Plug and Inlet Closure Caps. Fits 999- & 888- Devices.

16A / 20 Amp 2P+E Dust Cap P/N 999-613, P/N 999-613-WP
 16A / 20 Amp 3P+E Dust Cap P/N 999-614, P/N 999-614-WP
 16A / 20 Amp 3P+N+E Dust Cap P/N 999-615, P/N 999-615-WP
 32A / 30 Amp 2P+E, 3P+E Dust Cap P/N 999-623, P/N 999-623-WP
 32A / 30 Amp 3P+N+E Dust Cap P/N 999-625, P/N 999-625-WP
 63A / 60 Amp Dust Cap P/N 999-635
 125A / 100 Amp Dust Cap P/N 999-645
 63A / 60 Amp IP67 Watertight Cap P/N 999-635-WP
 125A / 100 Amp IP67 Watertight Cap P/N 999-645-WP

50/60 Hertz Hz	IEC EN 60309-1 IEC EN 60309-2 UL 1682 C22.2 No. 182.1	BS 4343 SABS 1239 VDE 0623 DIN 49462/63	Visit our web site to obtain dimensional product prints and specification data for part numbers listed below. Use the "Search by Part Number" field located on our homepage. Contact us for data sheets and specifications if the item you searched for is not displayed.			
VOLTAGE	AMPS	POLES	GROUND POSITION	DEVICE COLOR	PART NUMBER	DESCRIPTION
110-130 V	16 A	2 P + E	4H	Yellow	999-2341-NS	Inlet, IP67, European Approved
110-130 V	32 A	2 P + E	4H	Yellow	999-2342-NS	Inlet, IP67, European Approved
120 V	20 A	2 P + E	4H	Yellow		
120 V	30 A	2 P + E	4H	Yellow		
220/250 V	16A / 20A	2 P + E	6H	Blue		
220/250 V	16 A	3 P + E	9H	Blue		
120/208-144/250 V	16 A	3 P + N + E	9H	Blue		
220/250 V	32A / 30A	2 P + E	6H	Blue		
220/250 V	32 A	3 P + E	9H	Blue		
120/208-144/250 V	32 A	3 P + N + E	9H	Blue		
220/250 V	63A / 60A	2 P + E	6H	Blue	999-5336-NS	Inlet, IP67, European Approved
220/250 V	63 A	3 P + E	9H	Blue	999-5337-NS	Inlet, IP67, European Approved
120/208-144/250 V	63 A	3 P + N + E	9H	Blue	999-5338-NS	Inlet, IP67, European Approved
220/250 V	125 A	2 P + E	6H	Blue	999-5436-NS	Inlet, IP67, European Approved
220/250 V	125 A	3 P + E	9H	Blue	999-5449-NS	Inlet, IP67, European Approved
120/208-144/250 V	125 A	3 P + N + E	9H	Blue	999-5339-NS	Inlet, IP67, European Approved
380/415 V	16 A	2 P + E	9H	Red		
380/415 V	16 A	3 P + E	6H	Red		
220/380-240/415 V	16A / 20A	3 P + N + E	6H	Red		
380/415 V	32 A	2 P + E	9H	Red		
380/415 V	32 A	3 P + E	6H	Red		
220/380-240/415 V	32A / 30A	3 P + N + E	6H	Red		
380/415 V	63 A	2 P + E	9H	Red		
380/415 V	63 A	3 P + E	6H	Red	999-5440-NS	Inlet, IP67, European Approved
220/380-240/415 V	63A / 60A	3 P + N + E	6H	Red	999-5441-NS	Inlet, IP67, European Approved
380/415 V	125 A	2 P + E	9H	Red		
380/415 V	125 A	3 P + E	6H	Red	999-5446-NS	Inlet, IP67, European Approved
220/380-240/415 V	125A / 100A	3 P + N + E	6H	Red	888-678	Inlet, IP67, UL, CSA & European Listed



© 2014 International Configurations, Inc. Entire contents of this catalog copyrighted. www.InternationalConfig.com

International Configurations, Inc. • P.O. Box 3374 • Enfield, Connecticut 06083 • TEL (860) 749-6380 • FAX (860) 749-2985 195

Ingress Protection - IP Grades of Protection

IEC 60309 - CEE 17 devices are provided with different grades of protection as indicated in the table below. The IP standard rating system defines the degree of protection provided. The first digit defines the protection against the ingress of dust particles, the second digit defines the protection against the ingress of water. The table below outlines IP rating for electrical connectors.

Product Features

IEC 60309 devices are manufactured in Polyamide 6, which provides effective insulation and has extremely high impact resistance strength.

IP 44 IP 55 IP 67

1 st Digit	Definition	Solids
0	No Protection against contact and ingress of objects	
1	Protected against any large surface of the body, such as the back of a hand. Protected against solid objects greater than 50mm in size.	
2	Protected against access to hazardous parts by a finger or similar object. Protected against solid objects greater than 12.5mm in size.	
3	Protected against access to hazardous parts with a tool or thick wire. Protected against solid objects greater than 2.5mm in size.	
4	Protected against access to hazardous parts with a wire, screw, etc. Protected against solid objects greater than 1mm in size.	
5	Protected against access to hazardous parts. Dust protected.	
6	Protected against access to hazardous parts. Dust-tight.	

Products have standard sizes and positions of flanges and contacts. This makes for full interchangeability of plugs and sockets of the same type possible, even of plugs and sockets of different manufactures.

The position on the earth contact varies according to the voltage rating and polarity. This makes it impossible to connect plugs and sockets of different current ratings and voltage.

2 nd Digit	Definition	Liquids
0	No Protection	
1	Protected against water drops	
2	Protected against water drops at a 15 degree angle	
3	Protected against water spray at 60 degree angle	
4	Protected against water splashing from any angle	
5	Protected against water jets from any angle	
6	Protected against powerful water jets and heavy seas	
7	Protected against the effects of temporary submersion in water. Test requires 30 minutes at 1 meter depth.	
8	Protected against the effects of temporary submersion. Customer specification applies and specific testing may be required.	

Industrial plugs and sockets are color coded, which prevents confusion about voltage and current ratings.

RATED VOLTAGE COLOR

- 110-130 Volt Yellow
- 200-250 Volt Blue
- 380-415 Volt Red
- 120/208-144/250 Volt Blue
- 220/380-240-415 Volt Red

Available on request are:
 440 volt & 500 volt devices.
 Marine & shipboard container devices.
 Combination switched outlet devices.

